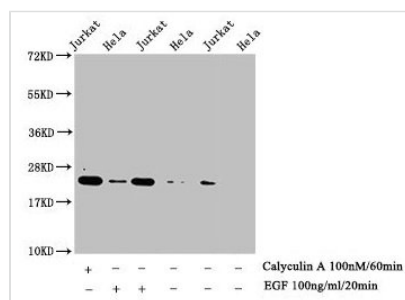




Phospho-HIST1H1E (T17) Antibody

Product Code	CSB-PA010380OA17phHU
Storage	Upon receipt, store at -20°C or -80°C. Avoid repeated freeze.
Uniprot No.	P10412
Immunogen	Peptide sequence around site of Phospho-Thr (17) derived from Human Histone H1.4
Raised In	Rabbit
Species Reactivity	Human
Tested Applications	ELISA, WB, IF; Recommended dilution: WB:1:500-1:2000, IF:1:1-1:10
Form	Liquid
Conjugate	Non-conjugated
Storage Buffer	Preservative: 0.03% Proclin 300 Constituents: 50% Glycerol, 0.01M PBS, pH 7.4
Purification Method	Antigen Affinity Purified
Isotype	IgG
Clonality	Polyclonal
Alias	Histone H1.4 (Histone H1b) (Histone H1s-4), HIST1H1E, H1F4
Immunogen Species	Homo sapiens (Human)
Research Area	Epigenetics and Nuclear Signaling
Target Names	HIST1H1E

Image



Western Blot

Detected samples: Jurkat whole cell lysate, HeLa whole cell lysate; Untreated (-) or treated (+) with Calyculin A and EGF

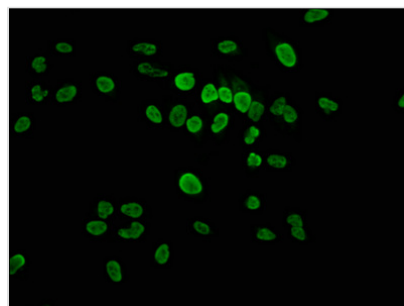
All lanes: HIST1H1E antibody at 1:1000

Secondary

Goat polyclonal to rabbit IgG at 1/40000 dilution

Predicted band size: 22 kDa

Observed band size: 22 kDa



Immunofluorescence staining of HeLa cells with CSB-PA010380OA17phHU at 1:2.5, counter-stained with DAPI. The cells were fixed in 4% formaldehyde, permeabilized using 0.2% Triton X-100 and blocked in 10% normal Goat Serum. The cells were then incubated with the antibody overnight at 4°C. The secondary antibody was Alexa Fluor 488-conjugated AffiniPure Goat Anti-Rabbit IgG(H+L).