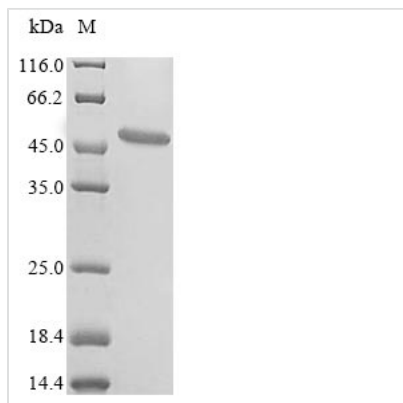




Recombinant Lampetra fluviatilis NADH-ubiquinone oxidoreductase chain 1 (MT-ND1)

Product Code	CSB-CF015076LNM(A4)
Relevance	Core subunit of the mitochondrial membrane respiratory chain NADH dehydrogenase (Complex I) that is believed to belong to the minimal assembly required for catalysis. Complex I functions in the transfer of electrons from NADH to the respiratory chain. The immediate electron acceptor for the enzyme is believed to be ubiquinone
Abbreviation	Recombinant Lampetra fluviatilis MT-ND1 protein
Storage	The shelf life is related to many factors, storage state, buffer ingredients, storage temperature and the stability of the protein itself. Generally, the shelf life of liquid form is 6 months at -20°C/-80°C. The shelf life of lyophilized form is 12 months at -20°C/-80°C.
Uniprot No.	O21069
Product Type	Transmembrane Protein
Immunogen Species	Lampetra fluviatilis (European river lamprey) (Petromyzon fluviatilis)
Purity	Greater than 85% as determined by SDS-PAGE.
Sequence	MLVMLTSTLILVLMVLLAVAFITMVERKTLGYMQLRKGPNVVGFMGILLQPIADG VKLFLKEPVWPTAASPALFIAAPIMALTLALSLWMFIPMPQSISTINLTLLVILAIS LSVYASLGGSGWASNSKYALIGALRAVAQTISYEVSLLGLILLCLIILTGGFSLQAFIY TQEHTWFLSSWPLAAMWVSTLAETNRTPFDLTEGESELVSGFNVEYAGGP FALFFLAEYSNILFMNTLTAIMFLGPLGPNLNILPIINVMKATPLIILFLWIRASY PRFRYDQLMHLMWKNFLPLNLALFTLQLSLAVSLGGAGVPQM
Research Area	Others
Source	in vitro E.coli expression system
Target Names	MT-ND1
Protein Names	NADH dehydrogenase subunit 1MTND1, NADH1, ND1
Expression Region	1-321aa
Notes	Repeated freezing and thawing is not recommended. Store working aliquots at 4°C for up to one week.
Tag Info	N-terminal 10xHis-SUMO-tagged
Mol. Weight	53.8 kDa
Protein Length	Full Length
Image	



(Tris-Glycine gel) Discontinuous SDS-PAGE (reduced) with 5% enrichment gel and 15% separation gel.

Reconstitution

We recommend that this vial be briefly centrifuged prior to opening to bring the contents to the bottom. Please reconstitute protein in deionized sterile water to a concentration of 0.1-1.0 mg/mL. We recommend to add 5-50% of glycerol (final concentration) and aliquot for long-term storage at $-20^{\circ}\text{C}/-80^{\circ}\text{C}$. Our default final concentration of glycerol is 50%. Customers could use it as reference.

Shelf Life

The shelf life is related to many factors, storage state, buffer ingredients, storage temperature and the stability of the protein itself. Generally, the shelf life of liquid form is 6 months at $-20^{\circ}\text{C}/-80^{\circ}\text{C}$. The shelf life of lyophilized form is 12 months at $-20^{\circ}\text{C}/-80^{\circ}\text{C}$.