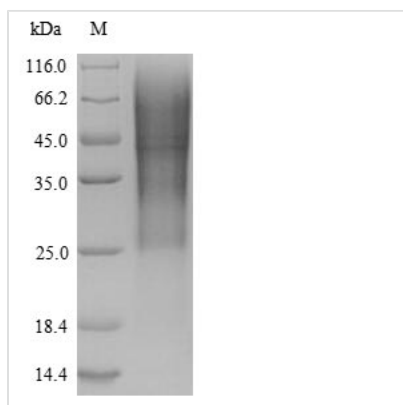




# Recombinant Rat Glucagon-like peptide 1 receptor (Glp1r), partial

<b>Product Code</b>	CSB-YP009514RA1
<b>Relevance</b>	G-protein coupled receptor for glucagon-like peptide 1 (GLP-1). Ligand binding triggers activation of a signaling cascade that leads to the activation of adenylyl cyclase and increased intracellular cAMP levels. Plays a role in regulating insulin secretion in response to GLP-1
<b>Abbreviation</b>	Recombinant Rat Glp1r protein, partial
<b>Storage</b>	The shelf life is related to many factors, storage state, buffer ingredients, storage temperature and the stability of the protein itself. Generally, the shelf life of liquid form is 6 months at -20°C/-80°C. The shelf life of lyophilized form is 12 months at -20°C/-80°C.
<b>Uniprot No.</b>	P32301
<b>Product Type</b>	Recombinant Protein
<b>Immunogen Species</b>	Rattus norvegicus (Rat)
<b>Purity</b>	≥ 90% as determined by SDS-PAGE.
<b>Sequence</b>	GPRPQGATVSLSETVQKWREYRHQCQRFLTEAPLLATGLFCNRTFDDYACW PDGPPGSFVNVSCPWYLPWASSVLQGHVYRFCTAEGIWHLHKDNSSLPWRDL SECEESKQGERN
<b>Source</b>	Yeast
<b>Target Names</b>	Glp1r
<b>Protein Names</b>	Glpr
<b>Expression Region</b>	22-135aa
<b>Notes</b>	Repeated freezing and thawing is not recommended. Store working aliquots at 4°C for up to one week.
<b>Tag Info</b>	N-terminal 6xHis-tagged
<b>Mol. Weight</b>	15.1 kDa
<b>Protein Length</b>	Partial

Image



(Tris-Glycine gel) Discontinuous SDS-PAGE (reduced) with 5% enrichment gel and 15% separation gel.

**The reducing (R) protein migrates as 60 kDa in SDS-PAGE may be due to glycosylation.**

**Recommended Product**

### Reconstitution

We recommend that this vial be briefly centrifuged prior to opening to bring the contents to the bottom. Please reconstitute protein in deionized sterile water to a concentration of 0.1-1.0 mg/mL. We recommend to add 5-50% of glycerol (final concentration) and aliquot for long-term storage at -20°C/-80°C. Our default final concentration of glycerol is 50%. Customers could use it as reference.

### Shelf Life

The shelf life is related to many factors, storage state, buffer ingredients, storage temperature and the stability of the protein itself.

Generally, the shelf life of liquid form is 6 months at -20°C/-80°C. The shelf life of lyophilized form is 12 months at -20°C/-80°C.