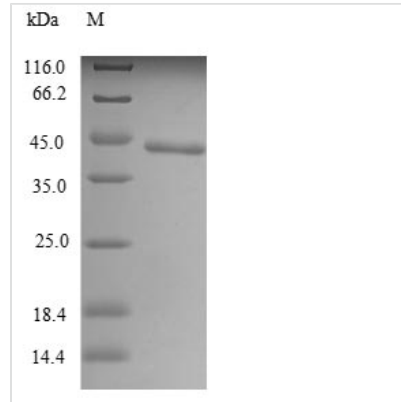




Recombinant Mouse Toll-like receptor 7 (Tlr7), partial

Product Code	CSB-EP023606MOB1
Relevance	Key component of innate and adaptive immunity. TLRs (Toll-like receptors) control host immune response against pathogens through recognition of molecular patterns specific to microorganisms. TLR7 is a nucleotide-sensing TLR which is activated by single-stranded RNA. Acts via MYD88 and TRAF6, leading to NF-kappa-B activation, cytokine secretion and the inflammatory response.
Abbreviation	Recombinant Mouse Tlr7 protein, partial
Storage	The shelf life is related to many factors, storage state, buffer ingredients, storage temperature and the stability of the protein itself. Generally, the shelf life of liquid form is 6 months at -20°C/-80°C. The shelf life of lyophilized form is 12 months at -20°C/-80°C.
Uniprot No.	P58681
Product Type	Recombinant Protein
Immunogen Species	Mus musculus (Mouse)
Purity	≥ 85% as determined by SDS-PAGE.
Sequence	FRWFPKTLPCSEVKVNIPEAHVIVDCTDKHLTEIPEGIPTNTTTLTLINHIPSISPD SFRRNLNHLLEIDLRCNCVPVLLGSKANVCTKRLQIRPGSFSGLSDLKALYLDGN QLLEIPQDLPSSLHLLSLEANNIFSITKENLTELNIETLYLGQNCYRNPNCVSY SIEKDAFLVMRNLKVLSLKDNNVTAVPTTLPPNLELYLYNNIIKKIQENDFNNLN ELQVLDLSGNCPRCYNVPYPCPCENNSPLQIHDNAFNSLTELVLRRLHSNSL QHVPPTWFKNMRNLQELDLSQNYLAREIEEAKFLHFLPNLVELDFS
Research Area	Epigenetics and Nuclear Signaling
Source	E.coli
Target Names	Tlr7
Expression Region	27-348aa
Notes	Repeated freezing and thawing is not recommended. Store working aliquots at 4°C for up to one week.
Tag Info	N-terminal 10xHis-tagged and C-terminal Myc-tagged
Mol. Weight	43.8 kDa
Protein Length	Partial
Image	



(Tris-Glycine gel) Discontinuous SDS-PAGE (reduced) with 5% enrichment gel and 15% separation gel.

Reconstitution

We recommend that this vial be briefly centrifuged prior to opening to bring the contents to the bottom. Please reconstitute protein in deionized sterile water to a concentration of 0.1-1.0 mg/mL. We recommend to add 5-50% of glycerol (final concentration) and aliquot for long-term storage at -20°C/-80°C. Our default final concentration of glycerol is 50%. Customers could use it as reference.

Shelf Life

The shelf life is related to many factors, storage state, buffer ingredients, storage temperature and the stability of the protein itself. Generally, the shelf life of liquid form is 6 months at -20°C/-80°C. The shelf life of lyophilized form is 12 months at -20°C/-80°C.