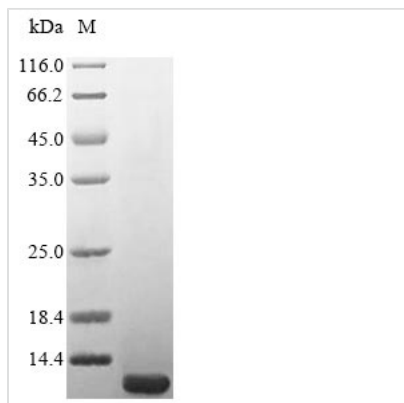




Recombinant Escherichia coli Translational regulator CsrA (csrA)

Product Code	CSB-EP543019ENTa0
Relevance	Affects glycogen biosynthesis, gluconeogenesis, cell size and surface properties. Regulates glycogen synthesis under both aerobic and anaerobic conditions. Seems to accelerate the degradation of glg gene transcripts, potentially through selective RNA binding. Acts to inhibit interaction between the LetD protein and the A subunit of DNA gyrase. Also required for motility and flagellum biosynthesis through the post-transcriptional activation of flhDC expression. This involves binding to and stabilization of the flhDC message by CsrA.
Abbreviation	Recombinant E.coli csrA protein
Storage	The shelf life is related to many factors, storage state, buffer ingredients, storage temperature and the stability of the protein itself. Generally, the shelf life of liquid form is 6 months at -20°C/-80°C. The shelf life of lyophilized form is 12 months at -20°C/-80°C.
Uniprot No.	B1XCM4
Product Type	Recombinant Protein
Immunogen Species	Escherichia coli (strain K12 / DH10B)
Purity	Greater than 85% as determined by SDS-PAGE.
Sequence	MLILTRRVGETLMIGDEVTVTVLGVKGNQVRIGVNPAPKEVSVHREEIYQRIQAE KSQQSSY
Research Area	Others
Source	E.coli
Target Names	csrA
Expression Region	1-61aa
Notes	Repeated freezing and thawing is not recommended. Store working aliquots at 4°C for up to one week.
Tag Info	N-terminal 6xHis-tagged
Mol. Weight	10.9 kDa
Protein Length	Full Length
Image	



(Tris-Glycine gel) Discontinuous SDS-PAGE (reduced) with 5% enrichment gel and 15% separation gel.

Reconstitution

We recommend that this vial be briefly centrifuged prior to opening to bring the contents to the bottom. Please reconstitute protein in deionized sterile water to a concentration of 0.1-1.0 mg/mL. We recommend to add 5-50% of glycerol (final concentration) and aliquot for long-term storage at -20°C/-80°C. Our default final concentration of glycerol is 50%. Customers could use it as reference.

Shelf Life

The shelf life is related to many factors, storage state, buffer ingredients, storage temperature and the stability of the protein itself. Generally, the shelf life of liquid form is 6 months at -20°C/-80°C. The shelf life of lyophilized form is 12 months at -20°C/-80°C.