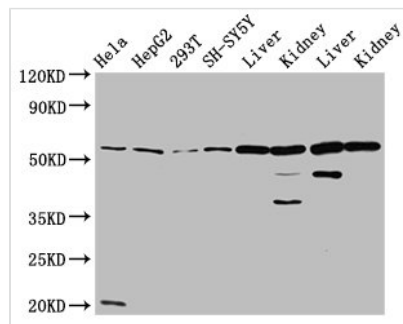




ALDH7A1 Antibody

Product Code	CSB-PA001579LA01HU
Storage	Upon receipt, store at -20°C or -80°C. Avoid repeated freeze.
Uniprot No.	P49419
Immunogen	Recombinant Human Alpha-aminoadipic semialdehyde dehydrogenase protein (386-515AA)
Raised In	Rabbit
Species Reactivity	Human, Rat, Mouse
Tested Applications	ELISA, WB, IHC, IF, IP; Recommended dilution: WB:1:500-1:5000, IHC:1:200-1:500, IF:1:50-1:200, IP:1:200-1:2000
Form	Liquid
Conjugate	Non-conjugated
Storage Buffer	Preservative: 0.03% Proclin 300 Constituents: 50% Glycerol, 0.01M PBS, pH 7.4
Purification Method	>95%, Protein G purified
Isotype	IgG
Clonality	Polyclonal
Alias	Alpha-aminoadipic semialdehyde dehydrogenase (Alpha-AASA dehydrogenase) (EC 1.2.1.31) (Aldehyde dehydrogenase family 7 member A1) (EC 1.2.1.3) (Antiquitin-1) (Betaine aldehyde dehydrogenase) (EC 1.2.1.8) (Delta1-piperideine-6-carboxylate dehydrogenase) (P6c dehydrogenase), ALDH7A1, ATQ1
Immunogen Species	Homo sapiens (Human)
Research Area	Signal Transduction
Target Names	ALDH7A1

Image



Western Blot

Positive WB detected in: HeLa whole cell lysate, HepG2 whole cell lysate, 293T whole cell lysate, SH-SY5Y whole cell lysate, Rat liver tissue, Rat kidney tissue, Mouse liver tissue, Mouse kidney tissue

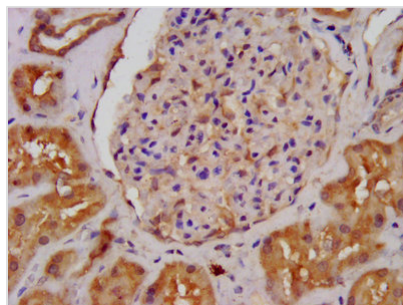
All lanes: ALDH7A1 antibody at 4.7µg/ml

Secondary

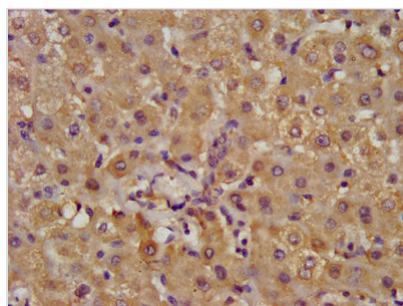
Goat polyclonal to rabbit IgG at 1/50000 dilution

Predicted band size: 59, 56, 52 kDa

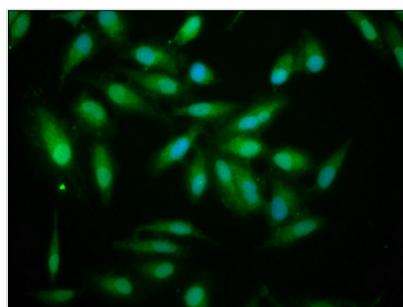
Observed band size: 59 kDa



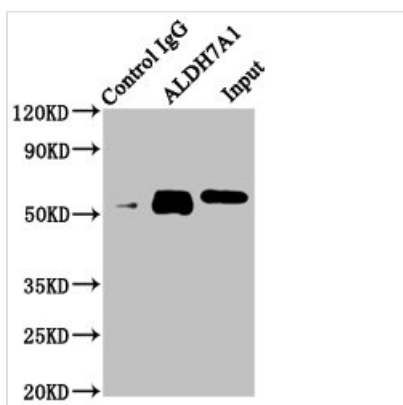
IHC image of CSB-PA001579LA01HU diluted at 1:400 and staining in paraffin-embedded human kidney tissue performed on a Leica Bond™ system. After dewaxing and hydration, antigen retrieval was mediated by high pressure in a citrate buffer (pH 6.0). Section was blocked with 10% normal goat serum 30min at RT. Then primary antibody (1% BSA) was incubated at 4°C overnight. The primary is detected by a biotinylated secondary antibody and visualized using an HRP conjugated SP system.



IHC image of CSB-PA001579LA01HU diluted at 1:400 and staining in paraffin-embedded human liver tissue performed on a Leica Bond™ system. After dewaxing and hydration, antigen retrieval was mediated by high pressure in a citrate buffer (pH 6.0). Section was blocked with 10% normal goat serum 30min at RT. Then primary antibody (1% BSA) was incubated at 4°C overnight. The primary is detected by a biotinylated secondary antibody and visualized using an HRP conjugated SP system.



Immunofluorescence staining of HeLa cells with CSB-PA001579LA01HU at 1:133, counter-stained with DAPI. The cells were fixed in 4% formaldehyde, permeabilized using 0.2% Triton X-100 and blocked in 10% normal Goat Serum. The cells were then incubated with the antibody overnight at 4°C. The secondary antibody was Alexa Fluor 488-conjugated AffiniPure Goat Anti-Rabbit IgG(H+L).



Immunoprecipitating ALDH7A1 in HeLa whole cell lysate
 Lane 1: Rabbit control IgG instead of CSB-PA001579LA01HU in HeLa whole cell lysate. For western blotting, a HRP-conjugated Protein G antibody was used as the secondary antibody (1/2000)
 Lane 2: CSB-PA001579LA01HU (6μg) + HeLa whole cell lysate (500μg)
 Lane 3: HeLa whole cell lysate (20μg)