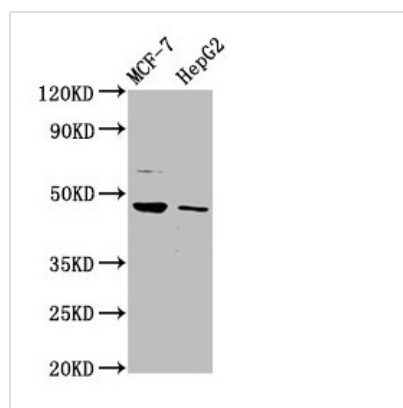




HEPACAM Antibody

Product Code	CSB-PA010287LA01HU
Storage	Upon receipt, store at -20°C or -80°C. Avoid repeated freeze.
Uniprot No.	Q14CZ8
Immunogen	Recombinant Human Hepatocyte cell adhesion molecule protein (265-415AA)
Raised In	Rabbit
Species Reactivity	Human
Tested Applications	ELISA, WB, IF; Recommended dilution: WB:1:500-1:5000, IF:1:200-1:500
Form	Liquid
Conjugate	Non-conjugated
Storage Buffer	Preservative: 0.03% Proclin 300 Constituents: 50% Glycerol, 0.01M PBS, pH 7.4
Purification Method	>95%, Protein G purified
Isotype	IgG
Clonality	Polyclonal
Alias	Hepatocyte cell adhesion molecule (Protein hepaCAM), HEPACAM
Immunogen Species	Homo sapiens (Human)
Research Area	Signal Transduction
Target Names	HEPACAM

Image



Western Blot

Positive WB detected in: MCF-7 whole cell lysate, HepG2 whole cell lysate

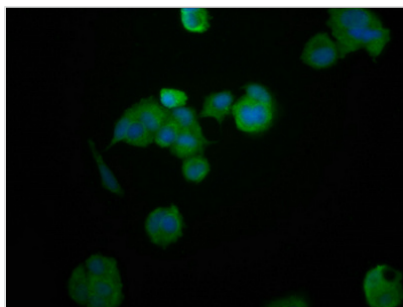
All lanes: HEPACAM antibody at 3.2µg/ml

Secondary

Goat polyclonal to rabbit IgG at 1/50000 dilution

Predicted band size: 47, 41 kDa

Observed band size: 47 kDa



Immunofluorescence staining of MCF-7 cells with CSB-PA010287LA01HU at 1:200, counter-stained with DAPI. The cells were fixed in 4% formaldehyde, permeabilized using 0.2% Triton X-100 and blocked in 10% normal Goat Serum. The cells were then incubated with the antibody overnight at 4°C. The secondary antibody was Alexa Fluor 488-conjugated AffiniPure Goat Anti-Rabbit IgG(H+L).