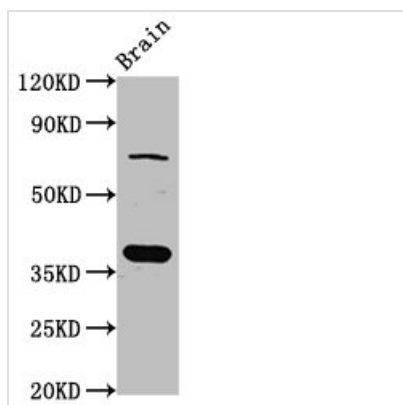




# SCAMP1 Antibody

<b>Product Code</b>	CSB-PA020750LA01HU
<b>Storage</b>	Upon receipt, store at -20°C or -80°C. Avoid repeated freeze.
<b>Uniprot No.</b>	O15126
<b>Immunogen</b>	Recombinant Human Secretory carrier-associated membrane protein 1 protein (2-134AA)
<b>Raised In</b>	Rabbit
<b>Species Reactivity</b>	Human, Rat
<b>Tested Applications</b>	ELISA, WB, IHC; Recommended dilution: WB:1:500-1:5000, IHC:1:200-1:500
<b>Form</b>	Liquid
<b>Conjugate</b>	Non-conjugated
<b>Storage Buffer</b>	Preservative: 0.03% Proclin 300 Constituents: 50% Glycerol, 0.01M PBS, pH 7.4
<b>Purification Method</b>	>95%, Protein G purified
<b>Isotype</b>	IgG
<b>Clonality</b>	Polyclonal
<b>Alias</b>	Secretory carrier-associated membrane protein 1 (Secretory carrier membrane protein 1), SCAMP1, SCAMP
<b>Immunogen Species</b>	Homo sapiens (Human)
<b>Research Area</b>	Neuroscience
<b>Target Names</b>	SCAMP1

## Image



### Western Blot

Positive WB detected in: Rat brain tissue

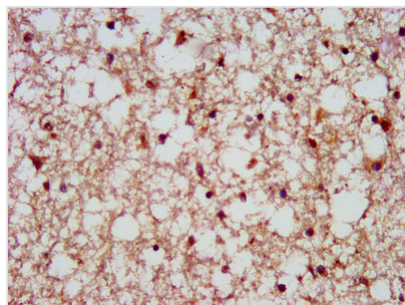
All lanes: SCAMP1 antibody at 4µg/ml

Secondary

Goat polyclonal to rabbit IgG at 1/50000 dilution

Predicted band size: 38, 19 kDa

Observed band size: 38 kDa



IHC image of CSB-PA020750LA01HU diluted at 1:500 and staining in paraffin-embedded human brain tissue performed on a Leica Bond™ system.

---

**Usage**

For Research Use Only. Not for use in diagnostic or therapeutic procedures.