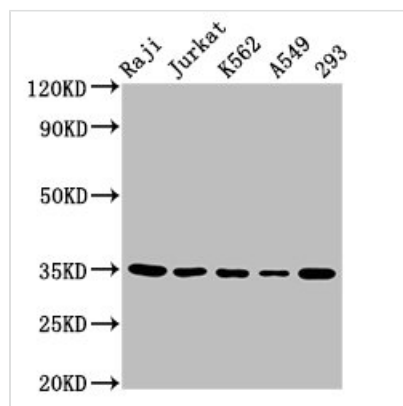




# TAL1 Antibody

<b>Product Code</b>	CSB-PA023110LA01HU
<b>Storage</b>	Upon receipt, store at -20°C or -80°C. Avoid repeated freeze.
<b>Uniprot No.</b>	P17542
<b>Immunogen</b>	Recombinant Human T-cell acute lymphocytic leukemia protein 1 protein (1-114AA)
<b>Raised In</b>	Rabbit
<b>Species Reactivity</b>	Human
<b>Tested Applications</b>	ELISA, WB, IF; Recommended dilution: WB:1:500-1:5000, IF:1:50-1:200
<b>Form</b>	Liquid
<b>Conjugate</b>	Non-conjugated
<b>Storage Buffer</b>	Preservative: 0.03% Proclin 300 Constituents: 50% Glycerol, 0.01M PBS, pH 7.4
<b>Purification Method</b>	>95%, Protein G purified
<b>Isotype</b>	IgG
<b>Clonality</b>	Polyclonal
<b>Alias</b>	T-cell acute lymphocytic leukemia protein 1 (TAL-1) (Class A basic helix-loop-helix protein 17) (bHLHa17) (Stem cell protein) (T-cell leukemia/lymphoma protein 5), TAL1, BHLHA17 SCL TCL5
<b>Immunogen Species</b>	Homo sapiens (Human)
<b>Research Area</b>	Cell Biology
<b>Target Names</b>	TAL1

## Image

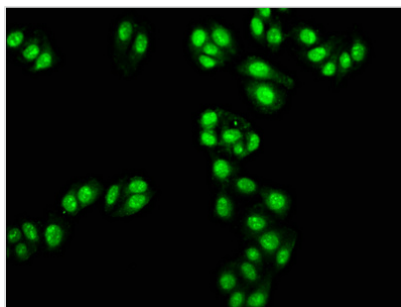


### Western Blot

Positive WB detected in: Raji whole cell lysate, Jurkat whole cell lysate, K562 whole cell lysate, A549 whole cell lysate, 293 whole cell lysate  
All lanes: TAL1 antibody at 5.5µg/ml

### Secondary

Goat polyclonal to rabbit IgG at 1/50000 dilution  
Predicted band size: 35, 32, 17 kDa  
Observed band size: 35 kDa



Immunofluorescence staining of HepG2 cells with CSB-PA023110LA01HU at 1:100, counter-stained with DAPI. The cells were fixed in 4% formaldehyde, permeabilized using 0.2% Triton X-100 and blocked in 10% normal Goat Serum. The cells were then incubated with the antibody overnight at 4°C. The secondary antibody was Alexa Fluor 488-conjugated AffiniPure Goat Anti-Rabbit IgG(H+L).