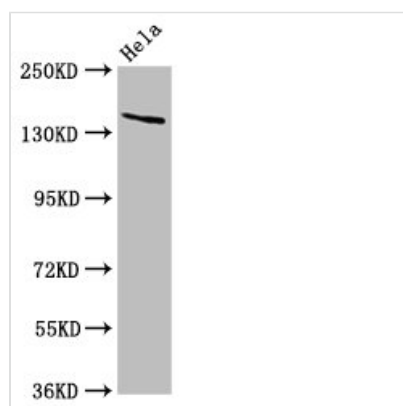




LAMC2 Antibody

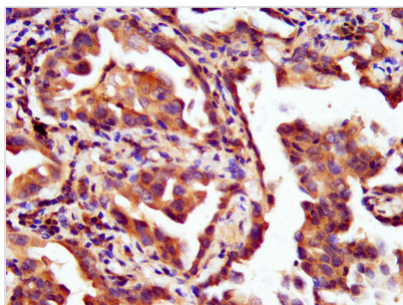
Product Code	CSB-PA618803LA01HU
Storage	Upon receipt, store at -20°C or -80°C. Avoid repeated freeze.
Uniprot No.	Q13753
Immunogen	Recombinant Human Laminin subunit gamma-2 protein (417-588AA)
Raised In	Rabbit
Species Reactivity	Human
Tested Applications	ELISA, WB, IHC; Recommended dilution: WB:1:500-1:5000, IHC:1:200-1:500
Form	Liquid
Conjugate	Non-conjugated
Storage Buffer	Preservative: 0.03% Proclin 300 Constituents: 50% Glycerol, 0.01M PBS, pH 7.4
Purification Method	>95%, Protein G purified
Isotype	IgG
Clonality	Polyclonal
Alias	Laminin subunit gamma-2 (Cell-scattering factor 140 kDa subunit) (CSF 140 kDa subunit) (Epiligrin subunit gamma) (Kalinin subunit gamma) (Kalinin/nicein/epiligrin 100 kDa subunit) (Ladsin 140 kDa subunit) (Laminin B2t chain) (Laminin-5 subunit gamma) (Large adhesive scatter factor 140 kDa subunit) (Nicein subunit gamma), LAMC2, LAMB2T LAMNB2
Immunogen Species	Homo sapiens (Human)
Research Area	Signal Transduction
Target Names	LAMC2

Image

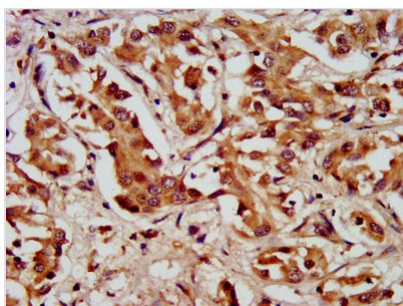


Western Blot

Positive WB detected in: HeLa whole cell lysate
 All lanes: LAMC2 antibody at 5µg/ml
 Secondary
 Goat polyclonal to rabbit IgG at 1/50000 dilution
 Predicted band size: 131, 122 kDa
 Observed band size: 140 kDa



IHC image of CSB-PA618803LA01HU diluted at 1:200 and staining in paraffin-embedded human lung cancer performed on a Leica Bond™ system. After dewaxing and hydration, antigen retrieval was mediated by high pressure in a citrate buffer (pH 6.0). Section was blocked with 10% normal goat serum 30min at RT. Then primary antibody (1% BSA) was incubated at 4°C overnight. The primary is detected by a biotinylated secondary antibody and visualized using an HRP conjugated SP system.



IHC image of CSB-PA618803LA01HU diluted at 1:200 and staining in paraffin-embedded human liver cancer performed on a Leica Bond™ system. After dewaxing and hydration, antigen retrieval was mediated by high pressure in a citrate buffer (pH 6.0). Section was blocked with 10% normal goat serum 30min at RT. Then primary antibody (1% BSA) was incubated at 4°C overnight. The primary is detected by a biotinylated secondary antibody and visualized using an HRP conjugated SP system.

Usage

For Research Use Only. Not for use in diagnostic or therapeutic procedures.