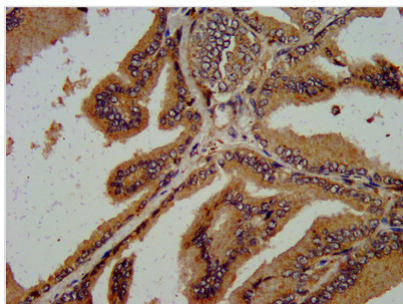




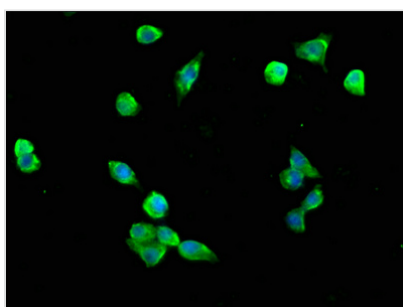
# NREP Antibody

<b>Product Code</b>	CSB-PA620971LA01HU
<b>Storage</b>	Upon receipt, store at -20°C or -80°C. Avoid repeated freeze.
<b>Uniprot No.</b>	Q16612
<b>Immunogen</b>	Recombinant Human Neuronal regeneration-related protein (1-68AA)
<b>Raised In</b>	Rabbit
<b>Species Reactivity</b>	Human
<b>Tested Applications</b>	ELISA, IHC, IF; Recommended dilution: IHC:1:500-1:1000, IF:1:200-1:500
<b>Form</b>	Liquid
<b>Conjugate</b>	Non-conjugated
<b>Storage Buffer</b>	Preservative: 0.03% Proclin 300 Constituents: 50% Glycerol, 0.01M PBS, pH 7.4
<b>Purification Method</b>	>95%, Protein G purified
<b>Isotype</b>	IgG
<b>Clonality</b>	Polyclonal
<b>Alias</b>	Neuronal regeneration-related protein (Neuronal protein 3.1) (Protein p311), NREP, C5orf13 P311
<b>Immunogen Species</b>	Homo sapiens (Human)
<b>Research Area</b>	Cardiovascular
<b>Target Names</b>	NREP

## Image



IHC image of CSB-PA620971LA01HU diluted at 1:600 and staining in paraffin-embedded human prostate tissue performed on a Leica Bond<sup>TM</sup> system.



Immunofluorescence staining of SH-SY5Y cells with CSB-PA620971LA01HU at 1:200, counter-stained with DAPI. The cells were fixed in 4% formaldehyde, permeabilized using 0.2% Triton X-100 and blocked in 10% normal Goat Serum. The cells were then incubated with the antibody overnight at 4°C. The secondary antibody was Alexa Fluor 488-conjugated AffiniPure Goat Anti-Rabbit IgG(H+L).



---

**Usage**

For Research Use Only. Not for use in diagnostic or therapeutic procedures.