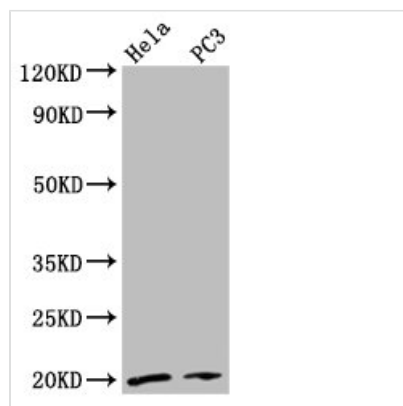




NDUFAF2 Antibody

Product Code	CSB-PA836643LA01HU
Storage	Upon receipt, store at -20°C or -80°C. Avoid repeated freeze.
Uniprot No.	Q8N183
Immunogen	Recombinant Human NADH dehydrogenase [ubiquinone] 1 alpha subcomplex assembly factor 2 protein (117-169AA)
Raised In	Rabbit
Species Reactivity	Human
Tested Applications	ELISA, WB, IHC; Recommended dilution: WB:1:500-1:5000, IHC:1:500-1:1000
Form	Liquid
Conjugate	Non-conjugated
Storage Buffer	Preservative: 0.03% Proclin 300 Constituents: 50% Glycerol, 0.01M PBS, pH 7.4
Purification Method	>95%, Protein G purified
Isotype	IgG
Clonality	Polyclonal
Alias	NADH dehydrogenase [ubiquinone] 1 alpha subcomplex assembly factor 2 (B17.2-like) (B17.2L) (Mimitin) (Myc-induced mitochondrial protein) (MMTN) (NDUFA12-like protein), NDUFAF2, NDUFA12L
Immunogen Species	Homo sapiens (Human)
Research Area	Tags & Cell Markers
Target Names	NDUFAF2

Image



Western Blot

Positive WB detected in: HeLa whole cell lysate, PC-3 whole cell lysate

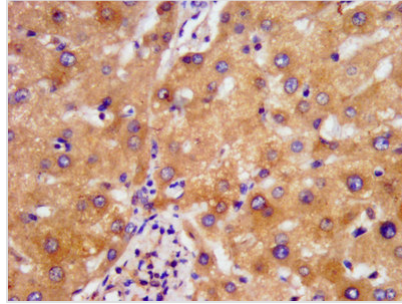
All lanes: NDUFAF2 antibody at 2.7µg/ml

Secondary

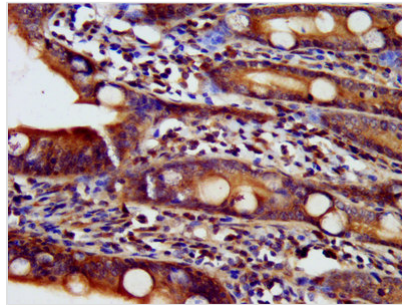
Goat polyclonal to rabbit IgG at 1/50000 dilution

Predicted band size: 20 kDa

Observed band size: 20 kDa



IHC image of CSB-PA836643LA01HU diluted at 1:500 and staining in paraffin-embedded human liver tissue performed on a Leica BondTM system. After dewaxing and hydration, antigen retrieval was mediated by high pressure in a citrate buffer (pH 6.0). Section was blocked with 10% normal goat serum 30min at RT. Then primary antibody (1% BSA) was incubated at 4°C overnight. The primary is detected by a biotinylated secondary antibody and visualized using an HRP conjugated SP system.



IHC image of CSB-PA836643LA01HU diluted at 1:500 and staining in paraffin-embedded human small intestine tissue performed on a Leica BondTM system. After dewaxing and hydration, antigen retrieval was mediated by high pressure in a citrate buffer (pH 6.0). Section was blocked with 10% normal goat serum 30min at RT. Then primary antibody (1% BSA) was incubated at 4°C overnight. The primary is detected by a biotinylated secondary antibody and visualized using an HRP conjugated SP system.