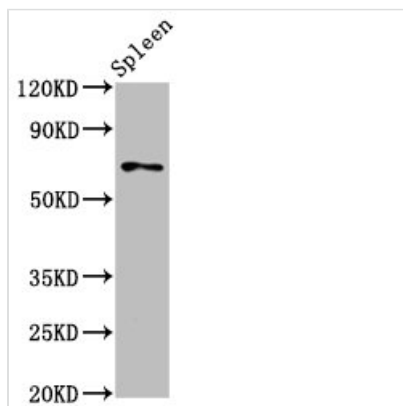




SSH3 Antibody

Product Code	CSB-PA837447LA01HU
Storage	Upon receipt, store at -20°C or -80°C. Avoid repeated freeze.
Uniprot No.	Q8TE77
Immunogen	Recombinant Human Protein phosphatase Slingshot homolog 3 protein (480-659AA)
Raised In	Rabbit
Species Reactivity	Human, Rat
Tested Applications	ELISA, WB, IHC, IF; Recommended dilution: WB:1:500-1:5000, IHC:1:200-1:500, IF:1:50-1:200
Form	Liquid
Conjugate	Non-conjugated
Storage Buffer	Preservative: 0.03% Proclin 300 Constituents: 50% Glycerol, 0.01M PBS, pH 7.4
Purification Method	>95%, Protein G purified
Isotype	IgG
Clonality	Polyclonal
Alias	Protein phosphatase Slingshot homolog 3 (EC 3.1.3.16) (EC 3.1.3.48) (SSH-like protein 3) (SSH-3L) (hSSH-3L), SSH3, SSH3L
Immunogen Species	Homo sapiens (Human)
Research Area	Signal Transduction
Target Names	SSH3

Image



Western Blot

Positive WB detected in: Rat spleen tissue

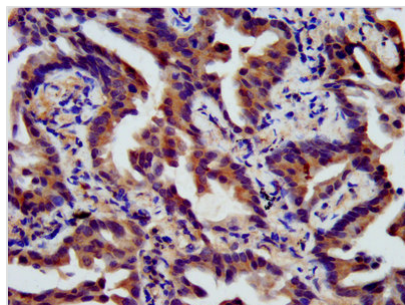
All lanes: SSH3 antibody at 5.3µg/ml

Secondary

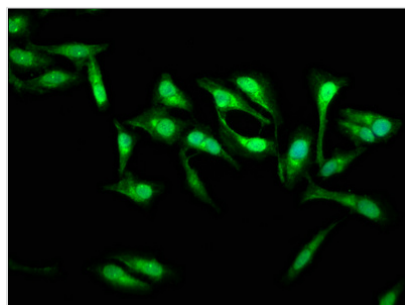
Goat polyclonal to rabbit IgG at 1/50000 dilution

Predicted band size: 73, 53, 57, 43, 17 kDa

Observed band size: 73 kDa



IHC image of CSB-PA837447LA01HU diluted at 1:400 and staining in paraffin-embedded human lung cancer performed on a Leica Bond™ system.



Immunofluorescence staining of HeLa cells with CSB-PA837447LA01HU at 1:133, counter-stained with DAPI. The cells were fixed in 4% formaldehyde, permeabilized using 0.2% Triton X-100 and blocked in 10% normal Goat Serum. The cells were then incubated with the antibody overnight at 4°C. The secondary antibody was Alexa Fluor 488-conjugated AffiniPure Goat Anti-Rabbit IgG(H+L).

Usage

For Research Use Only. Not for use in diagnostic or therapeutic procedures.