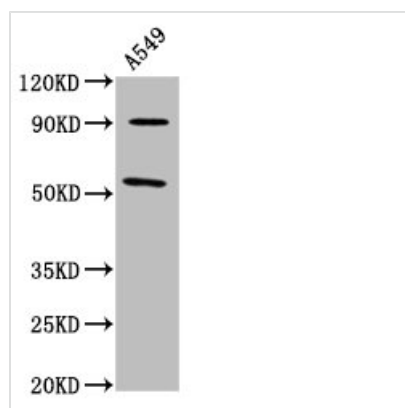




LEMD2 Antibody

Product Code	CSB-PA854097LA01HU
Storage	Upon receipt, store at -20°C or -80°C. Avoid repeated freeze.
Uniprot No.	Q8NC56
Immunogen	Recombinant Human LEM domain-containing protein 2 protein (17-204AA)
Raised In	Rabbit
Species Reactivity	Human
Tested Applications	ELISA, WB, IHC; Recommended dilution: WB:1:500-1:5000, IHC:1:200-1:500
Form	Liquid
Conjugate	Non-conjugated
Storage Buffer	Preservative: 0.03% Proclin 300 Constituents: 50% Glycerol, 0.01M PBS, pH 7.4
Purification Method	>95%, Protein G purified
Isotype	IgG
Clonality	Polyclonal
Alias	LEM domain-containing protein 2 (hLEM2), LEMD2
Immunogen Species	Homo sapiens (Human)
Research Area	Cell Biology
Target Names	LEMD2

Image



Western Blot

Positive WB detected in: A549 whole cell lysate

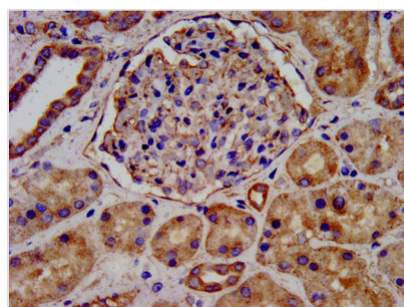
All lanes: LEMD2 antibody at 6.95µg/ml

Secondary

Goat polyclonal to rabbit IgG at 1/50000 dilution

Predicted band size: 57, 24 kDa

Observed band size: 57 kDa



IHC image of CSB-PA854097LA01HU diluted at 1:300 and staining in paraffin-embedded human kidney tissue performed on a Leica Bond™ system. After dewaxing and hydration, antigen retrieval was mediated by high pressure in a citrate buffer (pH 6.0). Section was blocked with 10% normal goat serum 30min at RT. Then primary antibody (1% BSA) was incubated at 4°C overnight. The primary is detected by a



biotinylated secondary antibody and visualized using an HRP conjugated SP system.
