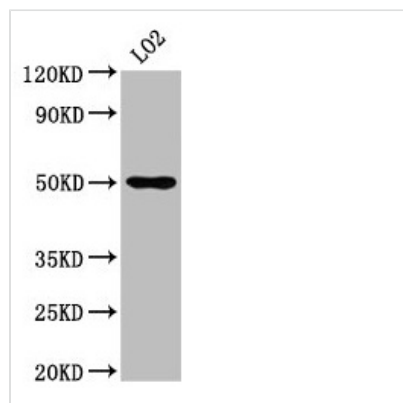




AGXT2 Antibody

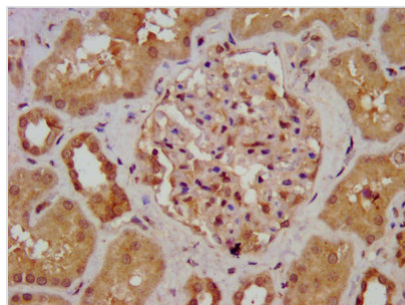
Product Code	CSB-PA866322LA01HU
Storage	Upon receipt, store at -20°C or -80°C. Avoid repeated freeze.
Uniprot No.	Q9BYV1
Immunogen	Recombinant Human Alanine--glyoxylate aminotransferase 2, mitochondrial protein (196-328AA)
Raised In	Rabbit
Species Reactivity	Human
Tested Applications	ELISA, WB, IHC, IF; Recommended dilution: WB:1:500-1:5000, IHC:1:500-1:1000, IF:1:200-1:500
Form	Liquid
Conjugate	Non-conjugated
Storage Buffer	Preservative: 0.03% Proclin 300 Constituents: 50% Glycerol, 0.01M PBS, pH 7.4
Purification Method	>95%, Protein G purified
Isotype	IgG
Clonality	Polyclonal
Alias	Alanine--glyoxylate aminotransferase 2, mitochondrial (AGT 2) (EC 2.6.1.44) ((R)-3-amino-2-methylpropionate--pyruvate transaminase) (EC 2.6.1.40) (Beta-ALAAT II) (Beta-alanine-pyruvate aminotransferase) (D-AIBAT), AGXT2, AGT2
Immunogen Species	Homo sapiens (Human)
Research Area	Signal Transduction
Target Names	AGXT2

Image

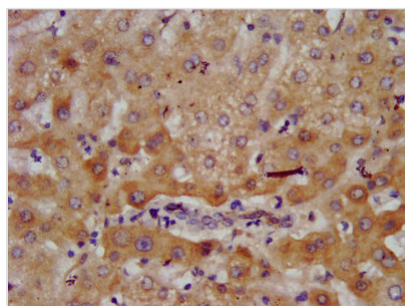


Western Blot

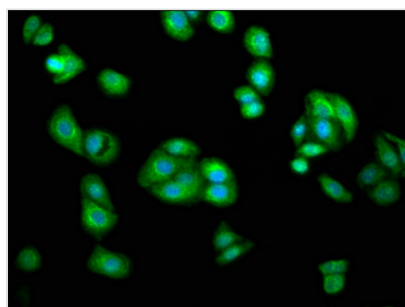
Positive WB detected in: LO2 whole cell lysate
 All lanes: AGXT2 antibody at 4.9µg/ml
 Secondary
 Goat polyclonal to rabbit IgG at 1/50000 dilution
 Predicted band size: 58, 50 kDa
 Observed band size: 50 kDa



IHC image of CSB-PA866322LA01HU diluted at 1:700 and staining in paraffin-embedded human kidney tissue performed on a Leica Bond™ system. After dewaxing and hydration, antigen retrieval was mediated by high pressure in a citrate buffer (pH 6.0). Section was blocked with 10% normal goat serum 30min at RT. Then primary antibody (1% BSA) was incubated at 4°C overnight. The primary is detected by a biotinylated secondary antibody and visualized using an HRP conjugated SP system.



IHC image of CSB-PA866322LA01HU diluted at 1:700 and staining in paraffin-embedded human liver tissue performed on a Leica Bond™ system. After dewaxing and hydration, antigen retrieval was mediated by high pressure in a citrate buffer (pH 6.0). Section was blocked with 10% normal goat serum 30min at RT. Then primary antibody (1% BSA) was incubated at 4°C overnight. The primary is detected by a biotinylated secondary antibody and visualized using an HRP conjugated SP system.



Immunofluorescence staining of HepG2 cells with CSB-PA866322LA01HU at 1:233, counter-stained with DAPI. The cells were fixed in 4% formaldehyde, permeabilized using 0.2% Triton X-100 and blocked in 10% normal Goat Serum. The cells were then incubated with the antibody overnight at 4°C. The secondary antibody was Alexa Fluor 488-conjugated AffiniPure Goat Anti-Rabbit IgG(H+L).

Usage

For Research Use Only. Not for use in diagnostic or therapeutic procedures.