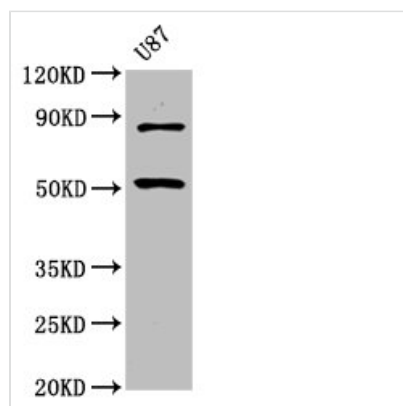




BHLHE41 Antibody

Product Code	CSB-PA883658LA01HU
Storage	Upon receipt, store at -20°C or -80°C. Avoid repeated freeze.
Uniprot No.	Q9C0J9
Immunogen	Recombinant Human Class E basic helix-loop-helix protein 41 protein (185-285AA)
Raised In	Rabbit
Species Reactivity	Human
Tested Applications	ELISA, WB; Recommended dilution: WB:1:500-1:5000
Form	Liquid
Conjugate	Non-conjugated
Storage Buffer	Preservative: 0.03% Proclin 300 Constituents: 50% Glycerol, 0.01M PBS, pH 7.4
Purification Method	>95%, Protein G purified
Isotype	IgG
Clonality	Polyclonal
Alias	Class E basic helix-loop-helix protein 41 (bHLHe41) (Class B basic helix-loop-helix protein 3) (bHLHb3) (Differentially expressed in chondrocytes protein 2) (hDEC2) (Enhancer-of-split and hairy-related protein 1) (SHARP-1), BHLHE41, BHLHB3 DEC2 SHARP1
Immunogen Species	Homo sapiens (Human)
Research Area	Neuroscience
Target Names	BHLHE41

Image



Western Blot

Positive WB detected in: U87 whole cell lysate

All lanes: BHLHE41 antibody at 6.75µg/ml

Secondary

Goat polyclonal to rabbit IgG at 1/50000 dilution

Predicted band size: 51 kDa

Observed band size: 51 kDa