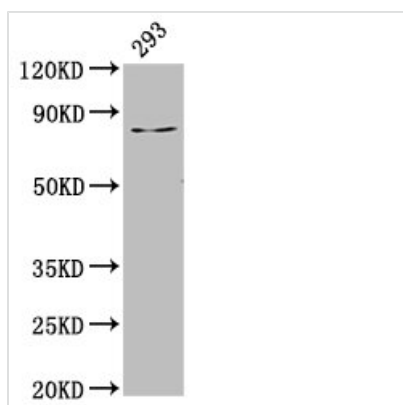




LAS1L Antibody

Product Code	CSB-PA897285LA01HU
Storage	Upon receipt, store at -20°C or -80°C. Avoid repeated freeze.
Uniprot No.	Q9Y4W2
Immunogen	Recombinant Human Ribosomal biogenesis protein LAS1L protein (490-565AA)
Raised In	Rabbit
Species Reactivity	Human
Tested Applications	ELISA, WB, IF; Recommended dilution: WB:1:500-1:5000, IF:1:200-1:500
Form	Liquid
Conjugate	Non-conjugated
Storage Buffer	Preservative: 0.03% Proclin 300 Constituents: 50% Glycerol, 0.01M PBS, pH 7.4
Purification Method	>95%, Protein G purified
Isotype	IgG
Clonality	Polyclonal
Alias	Ribosomal biogenesis protein LAS1L (Protein LAS1 homolog), LAS1L
Immunogen Species	Homo sapiens (Human)
Research Area	Cell Biology
Target Names	LAS1L

Image



Western Blot

Positive WB detected in: 293 whole cell lysate

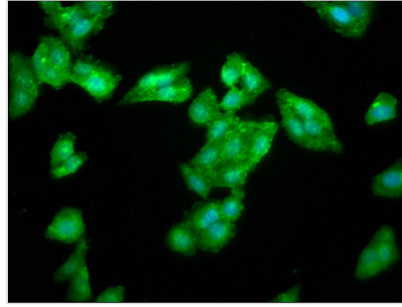
All lanes: LAS1L antibody at 3.5µg/ml

Secondary

Goat polyclonal to rabbit IgG at 1/50000 dilution

Predicted band size: 84, 82, 77, 34 kDa

Observed band size: 84 kDa



Immunofluorescence staining of HepG2 cells with CSB-PA897285LA01HU at 1:266, counter-stained with DAPI. The cells were fixed in 4% formaldehyde, permeabilized using 0.2% Triton X-100 and blocked in 10% normal Goat Serum. The cells were then incubated with the antibody overnight at 4°C. The secondary antibody was Alexa Fluor 488-conjugated AffiniPure Goat Anti-Rabbit IgG(H+L).

Usage

For Research Use Only. Not for use in diagnostic or therapeutic procedures.