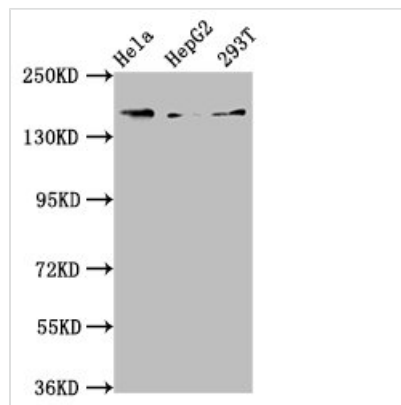




C4A Antibody

Product Code	CSB-PA003949LA01HU
Storage	Upon receipt, store at -20°C or -80°C. Avoid repeated freeze.
Uniprot No.	P0C0L4
Immunogen	Recombinant Human Complement C4-A protein (1027-1186AA)
Raised In	Rabbit
Species Reactivity	Human
Tested Applications	ELISA, WB, IHC; Recommended dilution: WB:1:500-1:5000, IHC:1:500-1:1000
Form	Liquid
Conjugate	Non-conjugated
Storage Buffer	Preservative: 0.03% Proclin 300 Constituents: 50% Glycerol, 0.01M PBS, pH 7.4
Purification Method	>95%, Protein G purified
Isotype	IgG
Clonality	Polyclonal
Alias	Complement C4-A (Acidic complement C4) (C3 and PZP-like alpha-2-macroglobulin domain-containing protein 2) [Cleaved into: Complement C4 beta chain; Complement C4-A alpha chain; C4a anaphylatoxin; C4b-A; C4d-A; Complement C4 gamma chain], C4A, CO4 CPAMD2
Immunogen Species	Homo sapiens (Human)
Research Area	Immunology
Target Names	C4A

Image



Western Blot

Positive WB detected in: HeLa whole cell lysate, HepG2 whole cell lysate, 293T whole cell lysate

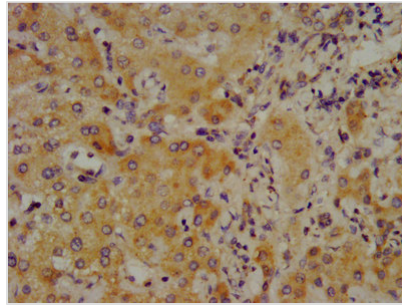
All lanes: C4A antibody at 3.9µg/ml

Secondary

Goat polyclonal to rabbit IgG at 1/50000 dilution

Predicted band size: 193, 188 kDa

Observed band size: 193 kDa



IHC image of CSB-PA003949LA01HU diluted at 1:700 and staining in paraffin-embedded human liver cancer performed on a Leica BondTM system. After dewaxing and hydration, antigen retrieval was mediated by high pressure in a citrate buffer (pH 6.0). Section was blocked with 10% normal goat serum 30min at RT. Then primary antibody (1% BSA) was incubated at 4°C overnight. The primary is detected by a biotinylated secondary antibody and visualized using an HRP conjugated SP system.