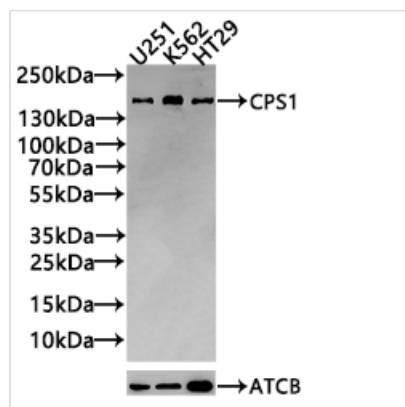




CPS1 Antibody

| | |
|----------------------------|---|
| Product Code | CSB-PA005913LA01HU |
| Storage | Upon receipt, store at -20°C or -80°C. Avoid repeated freeze. |
| Uniprot No. | P31327 |
| Immunogen | Synthesized peptide derived from human CPSM AA range: 816-866 |
| Raised In | Rabbit |
| Species Reactivity | Human |
| Tested Applications | ELISA, WB, IHC; Recommended dilution: WB:1:500-1:2000, IHC:1:100-1:300 |
| Form | Liquid |
| Storage Buffer | Liquid in PBS containing 50% glycerol, 0.5% BSA and 0.02% sodium azide. |
| Purification Method | Antigen affinity purification |
| Isotype | IgG |
| Clonality | Polyclonal |
| Product Type | Polyclonal Antibody |
| Immunogen Species | Homo sapiens (Human) |
| Research Area | Tags & Cell Markers |
| Target Names | CPS1 |

Image



Western Blot

Positive WB detected in: U251 whole cell lysate(30µg), K562 whole cell lysate(30µg), HT29 whole cell lysate(30µg)

All lanes: CPS1 antibody at 1:1000

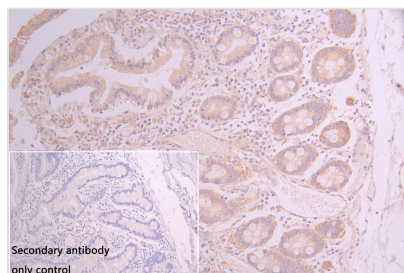
Secondary

Goat polyclonal to rabbit IgG at 1/20000 dilution

Predicted band size: 165,117,166 kDa

Observed band size: 165 kDa

Exposure time: 120s



IHC image of CSB-PA005913LA01HU diluted at 1:100 and staining in paraffin-embedded human small intestine tissue performed on a Leica Bond™ system. After dewaxing and hydration, antigen retrieval was mediated by high pressure in a citrate buffer (pH 6.0). Section was blocked with 10% normal goat serum 30min at RT. Then primary antibody (1% BSA) was incubated at 4°C overnight. The primary is detected by a Goat anti-rabbit polymer IgG labeled by HRP and visualized using 0.05% DAB. Secondary antibody only control: uses 1% BSA instead of



primary antibody

Usage

For Research Use Only. Not for use in diagnostic or therapeutic procedures.