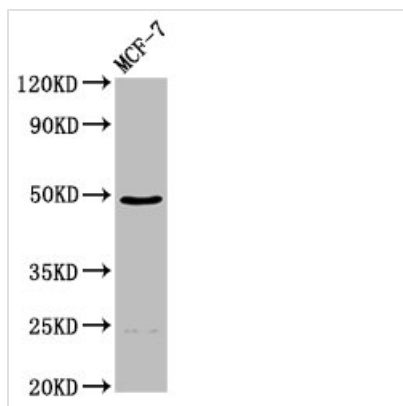




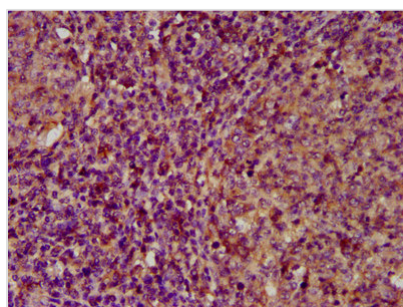
ECM1 Antibody

Product Code	CSB-PA007383LA01HU
Storage	Upon receipt, store at -20°C or -80°C. Avoid repeated freeze.
Uniprot No.	Q16610
Immunogen	Recombinant Human Extracellular matrix protein 1 protein (386-540AA)
Raised In	Rabbit
Species Reactivity	Human
Tested Applications	ELISA, WB, IHC; Recommended dilution: WB:1:500-1:5000, IHC:1:200-1:500
Form	Liquid
Conjugate	Non-conjugated
Storage Buffer	Preservative: 0.03% Proclin 300 Constituents: 50% Glycerol, 0.01M PBS, pH 7.4
Purification Method	>95%, Protein G purified
Isotype	IgG
Clonality	Polyclonal
Alias	Extracellular matrix protein 1 (Secretory component p85), ECM1
Immunogen Species	Homo sapiens (Human)
Research Area	Immunology
Target Names	ECM1

Image



Western Blot
 Positive WB detected in: MCF-7 whole cell lysate
 All lanes: ECM1 antibody at 4.5µg/ml
 Secondary
 Goat polyclonal to rabbit IgG at 1/50000 dilution
 Predicted band size: 61, 47, 20, 64 kDa
 Observed band size: 47 kDa



IHC image of CSB-PA007383LA01HU diluted at 1:200 and staining in paraffin-embedded human tonsil tissue performed on a Leica Bond™ system. After dewaxing and hydration, antigen retrieval was mediated by high pressure in a citrate buffer (pH 6.0). Section was blocked with 10% normal goat serum 30min at RT. Then primary antibody (1% BSA) was incubated at 4°C overnight. The primary is detected by a



biotinylated secondary antibody and visualized using an HRP conjugated SP system.

Usage

For Research Use Only. Not for use in diagnostic or therapeutic procedures.