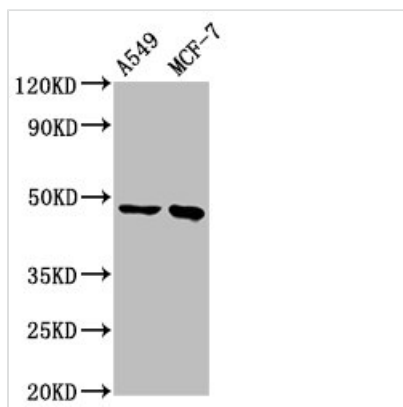




ESRRB Antibody

Product Code	CSB-PA007836LA01HU
Storage	Upon receipt, store at -20°C or -80°C. Avoid repeated freeze.
Uniprot No.	O95718
Immunogen	Recombinant Human Steroid hormone receptor ERR2 protein (432-502AA)
Raised In	Rabbit
Species Reactivity	Human
Tested Applications	ELISA, WB; Recommended dilution: WB:1:500-1:5000
Form	Liquid
Conjugate	Non-conjugated
Storage Buffer	Preservative: 0.03% Proclin 300 Constituents: 50% Glycerol, 0.01M PBS, pH 7.4
Purification Method	>95%, Protein G purified
Isotype	IgG
Clonality	Polyclonal
Alias	Steroid hormone receptor ERR2 (ERR beta-2) (Estrogen receptor-like 2) (Estrogen-related receptor beta) (ERR-beta) (Nuclear receptor subfamily 3 group B member 2), ESRRB, ERB2 ESRL2 NR3B2
Immunogen Species	Homo sapiens (Human)
Research Area	Signal Transduction
Target Names	ESRRB

Image



Western Blot

Positive WB detected in: A549 whole cell lysate, MCF-7 whole cell lysate

All lanes: ESRRB antibody at 3.7µg/ml

Secondary

Goat polyclonal to rabbit IgG at 1/50000 dilution

Predicted band size: 49, 57, 56 kDa

Observed band size: 49 kDa

Usage

For Research Use Only. Not for use in diagnostic or therapeutic procedures.