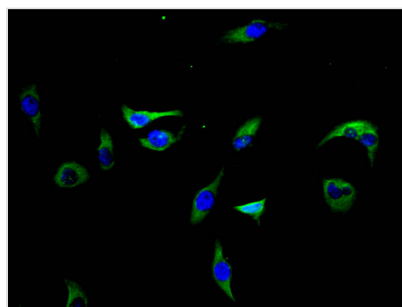




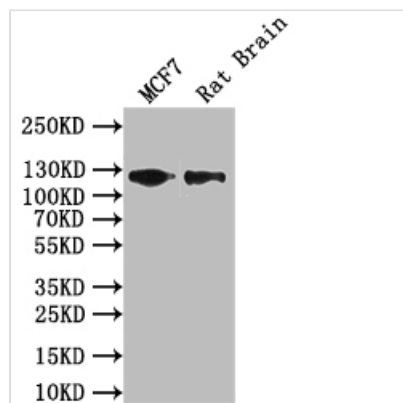
# LIFR Antibody

<b>Product Code</b>	CSB-PA012929LA01HU
<b>Storage</b>	Upon receipt, store at -20°C or -80°C. Avoid repeated freeze.
<b>Uniprot No.</b>	P42702
<b>Immunogen</b>	synthesized peptide derived from the Internal region of human LIFR
<b>Raised In</b>	Rabbit
<b>Species Reactivity</b>	Human, Rat
<b>Tested Applications</b>	ELISA, WB, IF; Recommended dilution: WB:1:1000-1:2000, IF:1:30-1:200
<b>Form</b>	Liquid
<b>Conjugate</b>	Non-conjugated
<b>Storage Buffer</b>	Liquid in PBS containing 50% glycerol, 0.5% BSA and 0.02% sodium azide
<b>Purification Method</b>	Antigen Affinity purified
<b>Isotype</b>	IgG
<b>Clonality</b>	Polyclonal
<b>Product Type</b>	Polyclonal Antibody
<b>Immunogen Species</b>	Homo sapiens (Human)
<b>Research Area</b>	Immunology
<b>Target Names</b>	LIFR

## Image



Immunofluorescence staining of A549 cells with CSB-PA012929LA01HU at 1:30, counter-stained with DAPI. The cells were fixed in 4% formaldehyde, permeabilized using 0.2% Triton X-100 and blocked in 10% normal Goat Serum. The cells were then incubated with the antibody overnight at 4°C. The secondary antibody was Alexa Fluor 488-conjugated AffiniPure Goat Anti-Rabbit IgG(H+L).



**Western Blot**  
 Positive WB detected in: MCF7 whole cell lysate, Rat Brain tissue lysate  
 All lanes: LIFR antibody at 1:1000  
 Secondary  
 Goat polyclonal to rabbit IgG at 1/50000 dilution  
 Predicted band size: 123 kDa  
 Observed band size: 123 kDa