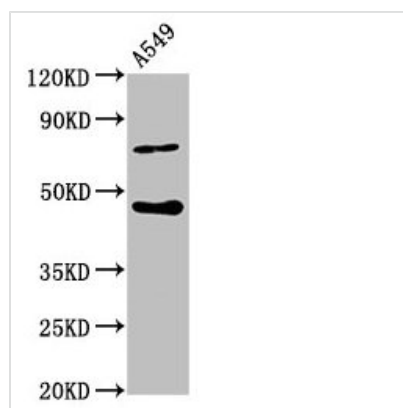




SPOPL Antibody

Product Code	CSB-PA022602LA01HU
Storage	Upon receipt, store at -20°C or -80°C. Avoid repeated freeze.
Uniprot No.	Q6IQ16
Immunogen	Recombinant Human Speckle-type POZ protein-like protein (1-120AA)
Raised In	Rabbit
Species Reactivity	Human
Tested Applications	ELISA, WB; Recommended dilution: WB:1:500-1:5000
Form	Liquid
Conjugate	Non-conjugated
Storage Buffer	Preservative: 0.03% Proclin 300 Constituents: 50% Glycerol, 0.01M PBS, pH 7.4
Purification Method	>95%, Protein G purified
Isotype	IgG
Clonality	Polyclonal
Alias	Speckle-type POZ protein-like (HIB homolog 2) (Roadkill homolog 2), SPOPL
Immunogen Species	Homo sapiens (Human)
Research Area	Others
Target Names	SPOPL

Image



Western Blot

Positive WB detected in: A549 whole cell lysate

All lanes: SPOPL antibody at 6.3µg/ml

Secondary

Goat polyclonal to rabbit IgG at 1/50000 dilution

Predicted band size: 45 kDa

Observed band size: 45 kDa