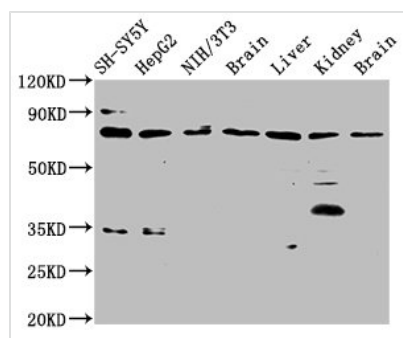




CUX1 Antibody

Product Code	CSB-PA614451LA01HU
Storage	Upon receipt, store at -20°C or -80°C. Avoid repeated freeze.
Uniprot No.	Q13948
Immunogen	Recombinant Human Protein CASP protein (50-210AA)
Raised In	Rabbit
Species Reactivity	Human, Mouse, Rat
Tested Applications	ELISA, WB, IHC; Recommended dilution: WB:1:500-1:5000, IHC:1:200-1:500
Form	Liquid
Conjugate	Non-conjugated
Storage Buffer	Preservative: 0.03% Proclin 300 Constituents: 50% Glycerol, 0.01M PBS, pH 7.4
Purification Method	>95%, Protein G purified
Isotype	IgG
Clonality	Polyclonal
Alias	Protein CASP, CUX1, CUTL1
Immunogen Species	Homo sapiens (Human)
Research Area	Epigenetics and Nuclear Signaling
Target Names	CUX1

Image



Western Blot

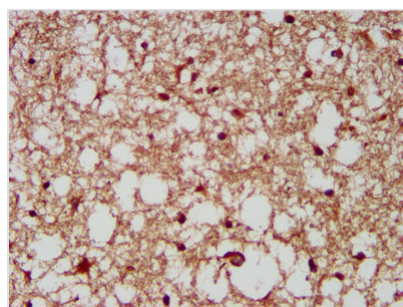
Positive WB detected in: SH-SY5Y whole cell lysate, HepG2 whole cell lysate, NIH/3T3 whole cell lysate, Rat brain tissue, Rat liver tissue, Rat kidney tissue, Mouse brain tissue

All lanes: CUX1 antibody at 3.7µg/ml

Secondary

Goat polyclonal to rabbit IgG at 1/50000 dilution
Predicted band size: 78, 73, 165, 162, 166, 154, 158, 148, 76 kDa

Observed band size: 78 kDa



IHC image of CSB-PA614451LA01HU diluted at 1:200 and staining in paraffin-embedded human brain tissue performed on a Leica BondTM system. After dewaxing and hydration, antigen retrieval was mediated by high pressure in a citrate buffer (pH 6.0). Section was blocked with 10% normal goat serum 30min at RT. Then primary antibody (1% BSA) was incubated at 4°C overnight. The primary is detected by a biotinylated secondary antibody and visualized using an HRP conjugated SP system.

