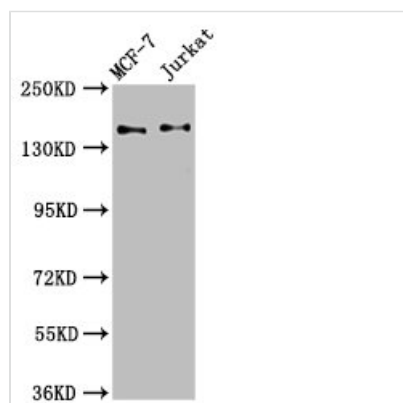




KTN1 Antibody

Product Code	CSB-PA773030LA01HU
Storage	Upon receipt, store at -20°C or -80°C. Avoid repeated freeze.
Uniprot No.	Q86UP2
Immunogen	Recombinant Human Kinectin protein (978-1116AA)
Raised In	Rabbit
Species Reactivity	Human
Tested Applications	ELISA, WB, IHC, IP; Recommended dilution: WB:1:500-1:5000, IHC:1:200-1:500, IP:1:200-1:2000
Form	Liquid
Conjugate	Non-conjugated
Storage Buffer	Preservative: 0.03% Proclin 300 Constituents: 50% Glycerol, 0.01M PBS, pH 7.4
Purification Method	>95%, Protein G purified
Isotype	IgG
Clonality	Polyclonal
Alias	Kinectin (CG-1 antigen) (Kinesin receptor), KTN1, CG1 KIAA0004
Immunogen Species	Homo sapiens (Human)
Research Area	Signal Transduction
Target Names	KTN1

Image



Western Blot

Positive WB detected in: MCF-7 whole cell lysate, Jurkat whole cell lysate

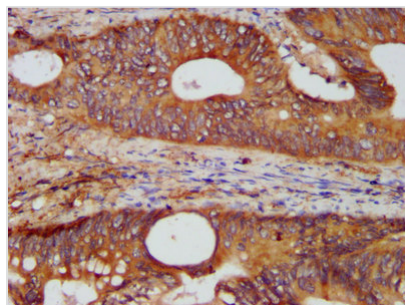
All lanes: KTN1 antibody at 3.4µg/ml

Secondary

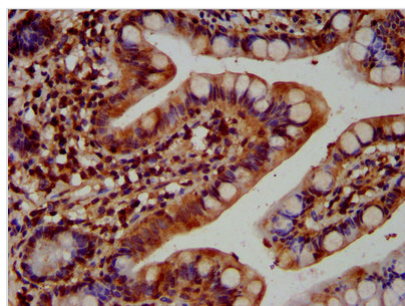
Goat polyclonal to rabbit IgG at 1/50000 dilution

Predicted band size: 157, 150, 151, 153 kDa

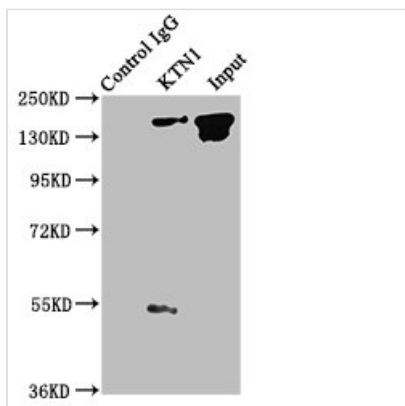
Observed band size: 157 kDa



IHC image of CSB-PA773030LA01HU diluted at 1:400 and staining in paraffin-embedded human colon cancer performed on a Leica BondTM system. After dewaxing and hydration, antigen retrieval was mediated by high pressure in a citrate buffer (pH 6.0). Section was blocked with 10% normal goat serum 30min at RT. Then primary antibody (1% BSA) was incubated at 4°C overnight. The primary is detected by a biotinylated secondary antibody and visualized using an HRP conjugated SP system.



IHC image of CSB-PA773030LA01HU diluted at 1:400 and staining in paraffin-embedded human small intestine tissue performed on a Leica BondTM system. After dewaxing and hydration, antigen retrieval was mediated by high pressure in a citrate buffer (pH 6.0). Section was blocked with 10% normal goat serum 30min at RT. Then primary antibody (1% BSA) was incubated at 4°C overnight. The primary is detected by a biotinylated secondary antibody and visualized using an HRP conjugated SP system.



Immunoprecipitating KTN1 in A549 whole cell lysate
 Lane 1: Rabbit control IgG instead of CSB-PA773030LA01HU in A549 whole cell lysate. For western blotting, a HRP-conjugated Protein G antibody was used as the secondary antibody (1/2000)
 Lane 2: CSB-PA773030LA01HU (6μg) + A549 whole cell lysate (1mg)
 Lane 3: A549 whole cell lysate (20μg)