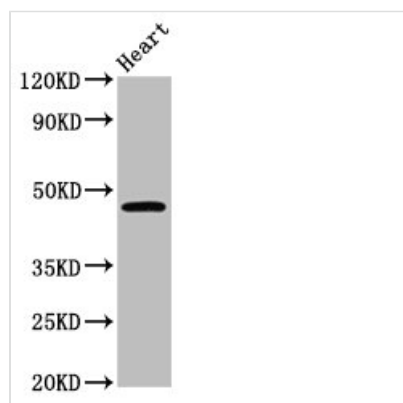




CERS3 Antibody

Product Code	CSB-PA811597LA01HU
Storage	Upon receipt, store at -20°C or -80°C. Avoid repeated freeze.
Uniprot No.	Q8IU89
Immunogen	Recombinant Human Ceramide synthase 3 protein (59-134AA)
Raised In	Rabbit
Species Reactivity	Human, Mouse
Tested Applications	ELISA, WB; Recommended dilution: WB:1:500-1:5000
Form	Liquid
Conjugate	Non-conjugated
Storage Buffer	Preservative: 0.03% Proclin 300 Constituents: 50% Glycerol, 0.01M PBS, pH 7.4
Purification Method	>95%, Protein G purified
Isotype	IgG
Clonality	Polyclonal
Alias	Ceramide synthase 3 (CerS3) (EC 2.3.1.24) (Dihydroceramide synthase 3) (LAG1 longevity assurance homolog 3), CERS3, LASS3
Immunogen Species	Homo sapiens (Human)
Research Area	Signal Transduction
Target Names	CERS3

Image



Western Blot

Positive WB detected in: Mouse heart tissue

All lanes: CERS3 antibody at 3.6µg/ml

Secondary

Goat polyclonal to rabbit IgG at 1/50000 dilution

Predicted band size: 47 kDa

Observed band size: 47 kDa

Usage

For Research Use Only. Not for use in diagnostic or therapeutic procedures.