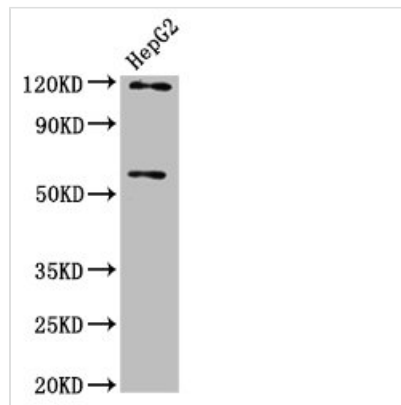




FAM20C Antibody

Product Code	CSB-PA816901LA01HU
Storage	Upon receipt, store at -20°C or -80°C. Avoid repeated freeze.
Uniprot No.	Q8IXL6
Immunogen	Recombinant Human Extracellular serine/threonine protein kinase FAM20C protein (107-224AA)
Raised In	Rabbit
Species Reactivity	Human
Tested Applications	ELISA, WB, IHC; Recommended dilution: WB:1:500-1:5000, IHC:1:500-1:1000
Form	Liquid
Conjugate	Non-conjugated
Storage Buffer	Preservative: 0.03% Proclin 300 Constituents: 50% Glycerol, 0.01M PBS, pH 7.4
Purification Method	>95%, Protein G purified
Isotype	IgG
Clonality	Polyclonal
Alias	Extracellular serine/threonine protein kinase FAM20C (EC 2.7.11.1) (Dentin matrix protein 4) (DMP-4) (Golgi casein kinase) (Golgi-enriched fraction casein kinase) (GEF-CK), FAM20C, DMP4
Immunogen Species	Homo sapiens (Human)
Research Area	Signal Transduction
Target Names	FAM20C

Image



Western Blot

Positive WB detected in: HepG2 whole cell lysate

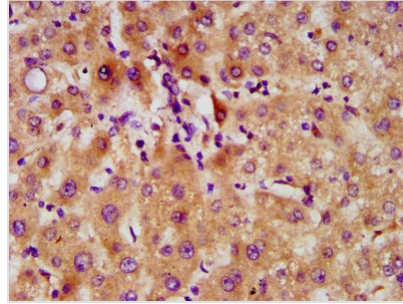
All lanes: FAM20C antibody at 4.1 µg/ml

Secondary

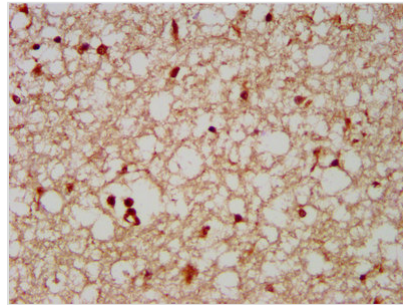
Goat polyclonal to rabbit IgG at 1/50000 dilution

Predicted band size: 67, 30 kDa

Observed band size: 67 kDa



IHC image of CSB-PA816901LA01HU diluted at 1:500 and staining in paraffin-embedded human liver tissue performed on a Leica Bond™ system. After dewaxing and hydration, antigen retrieval was mediated by high pressure in a citrate buffer (pH 6.0). Section was blocked with 10% normal goat serum 30min at RT. Then primary antibody (1% BSA) was incubated at 4°C overnight. The primary is detected by a biotinylated secondary antibody and visualized using an HRP conjugated SP system.



IHC image of CSB-PA816901LA01HU diluted at 1:500 and staining in paraffin-embedded human brain tissue performed on a Leica Bond™ system. After dewaxing and hydration, antigen retrieval was mediated by high pressure in a citrate buffer (pH 6.0). Section was blocked with 10% normal goat serum 30min at RT. Then primary antibody (1% BSA) was incubated at 4°C overnight. The primary is detected by a biotinylated secondary antibody and visualized using an HRP conjugated SP system.

Usage

For Research Use Only. Not for use in diagnostic or therapeutic procedures.