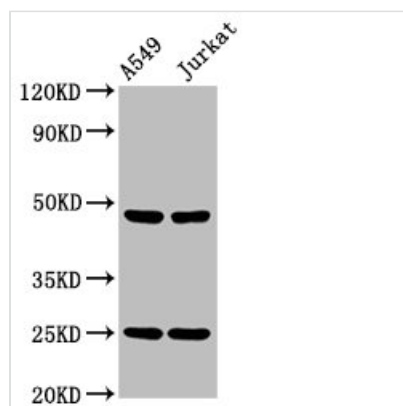




LILRA3 Antibody

Product Code	CSB-PA836677LA01HU
Storage	Upon receipt, store at -20°C or -80°C. Avoid repeated freeze.
Uniprot No.	Q8N6C8
Immunogen	Recombinant Human Leukocyte immunoglobulin-like receptor subfamily A member 3 protein (222-313AA)
Raised In	Rabbit
Species Reactivity	Human
Tested Applications	ELISA, WB, IHC; Recommended dilution: WB:1:500-1:5000, IHC:1:200-1:500
Form	Liquid
Conjugate	Non-conjugated
Storage Buffer	Preservative: 0.03% Proclin 300 Constituents: 50% Glycerol, 0.01M PBS, pH 7.4
Purification Method	>95%, Protein G purified
Isotype	IgG
Clonality	Polyclonal
Alias	Leukocyte immunoglobulin-like receptor subfamily A member 3 (CD85 antigen-like family member E) (Immunoglobulin-like transcript 6) (ILT-6) (Leukocyte immunoglobulin-like receptor 4) (LIR-4) (Monocyte inhibitory receptor HM43/HM31) (CD antigen CD85e), LILRA3, ILT6 LIR4
Immunogen Species	Homo sapiens (Human)
Research Area	Immunology
Target Names	LILRA3

Image



Western Blot

Positive WB detected in: A549 whole cell lysate, Jurkat whole cell lysate

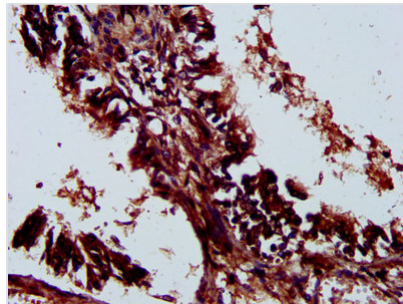
All lanes: LILRA3 antibody at 4.2µg/ml

Secondary

Goat polyclonal to rabbit IgG at 1/50000 dilution

Predicted band size: 48, 41, 50 kDa

Observed band size: 48 kDa



IHC image of CSB-PA836677LA01HU diluted at 1:300 and staining in paraffin-embedded human lung tissue performed on a Leica Bond™ system. After dewaxing and hydration, antigen retrieval was mediated by high pressure in a citrate buffer (pH 6.0). Section was blocked with 10% normal goat serum 30min at RT. Then primary antibody (1% BSA) was incubated at 4°C overnight. The primary is detected by a biotinylated secondary antibody and visualized using an HRP conjugated SP system.