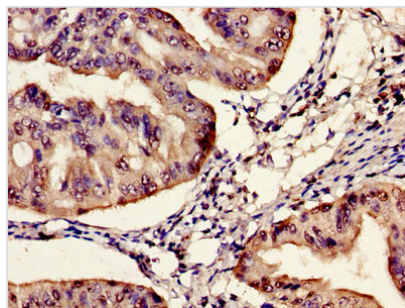




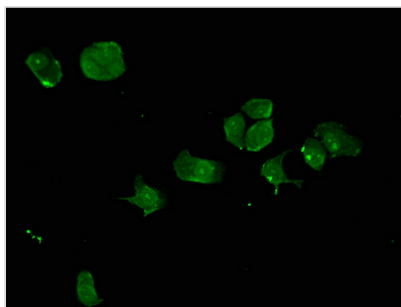
SYNE2 Antibody

Product Code	CSB-PA841001LA01HU
Storage	Upon receipt, store at -20°C or -80°C. Avoid repeated freeze.
Uniprot No.	Q8WXH0
Immunogen	Recombinant Human Nesprin-2 protein (1-176AA)
Raised In	Rabbit
Species Reactivity	Human
Tested Applications	ELISA, IHC, IF; Recommended dilution: IHC:1:20-1:200, IF:1:50-1:200
Form	Liquid
Conjugate	Non-conjugated
Storage Buffer	Preservative: 0.03% Proclin 300 Constituents: 50% Glycerol, 0.01M PBS, pH 7.4
Purification Method	>95%, Protein G purified
Isotype	IgG
Clonality	Polyclonal
Alias	Nesprin-2 (KASH domain-containing protein 2) (KASH2) (Nuclear envelope spectrin repeat protein 2) (Nucleus and actin connecting element protein) (Protein NUANCE) (Synaptic nuclear envelope protein 2) (Syne-2), SYNE2, KIAA1011 NUA
Immunogen Species	Homo sapiens (Human)
Research Area	Tags & Cell Markers
Target Names	SYNE2

Image



Immunohistochemistry of paraffin-embedded human endometrial cancer using CSB-PA841001LA01HU at dilution of 1:100



Immunofluorescent analysis of MCF-7 cells using CSB-PA841001LA01HU at dilution of 1:100 and Alexa Fluor 488-conjugated AffiniPure Goat Anti-Rabbit IgG(H+L)

Usage

For Research Use Only. Not for use in diagnostic or therapeutic procedures.