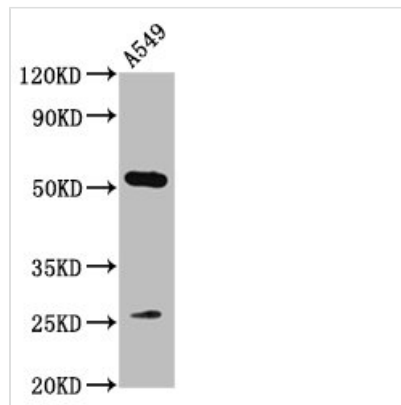




MICU1 Antibody

Product Code	CSB-PA860652LA01HU
Storage	Upon receipt, store at -20°C or -80°C. Avoid repeated freeze.
Uniprot No.	Q9BPX6
Immunogen	Recombinant Human Calcium uptake protein 1, mitochondrial protein (55-191AA)
Raised In	Rabbit
Species Reactivity	Human
Tested Applications	ELISA, WB, IHC; Recommended dilution: WB:1:500-1:5000, IHC:1:200-1:500
Form	Liquid
Conjugate	Non-conjugated
Storage Buffer	Preservative: 0.03% Proclin 300 Constituents: 50% Glycerol, 0.01M PBS, pH 7.4
Purification Method	>95%, Protein G purified
Isotype	IgG
Clonality	Polyclonal
Alias	Calcium uptake protein 1, mitochondrial (Atopy-related autoantigen CALC) (ara CALC) (Calcium-binding atopy-related autoantigen 1) (allergen Hom s 4), MICU1, CALC CBARA1
Immunogen Species	Homo sapiens (Human)
Research Area	Immunology
Target Names	MICU1

Image



Western Blot

Positive WB detected in: A549 whole cell lysate

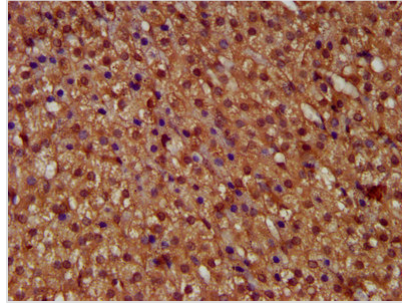
All lanes: MICU1 antibody at 3.2µg/ml

Secondary

Goat polyclonal to rabbit IgG at 1/50000 dilution

Predicted band size: 55, 46, 33, 32 kDa

Observed band size: 55 kDa



IHC image of CSB-PA860652LA01HU diluted at 1:400 and staining in paraffin-embedded human adrenal gland tissue performed on a Leica Bond™ system. After dewaxing and hydration, antigen retrieval was mediated by high pressure in a citrate buffer (pH 6.0). Section was blocked with 10% normal goat serum 30min at RT. Then primary antibody (1% BSA) was incubated at 4°C overnight. The primary is detected by a biotinylated secondary antibody and visualized using an HRP conjugated SP system.

Usage

For Research Use Only. Not for use in diagnostic or therapeutic procedures.