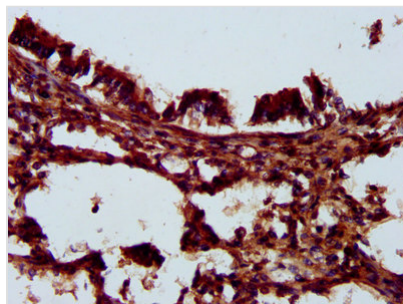




KLK14 Antibody

Product Code	CSB-PA868375LA01HU
Storage	Upon receipt, store at -20°C or -80°C. Avoid repeated freeze.
Uniprot No.	Q9P0G3
Immunogen	Recombinant Human Kallikrein-14 protein (114-225AA)
Raised In	Rabbit
Species Reactivity	Human
Tested Applications	ELISA, IHC; Recommended dilution: IHC:1:200-1:500
Form	Liquid
Conjugate	Non-conjugated
Storage Buffer	Preservative: 0.03% Proclin 300 Constituents: 50% Glycerol, 0.01M PBS, pH 7.4
Purification Method	>95%, Protein G purified
Isotype	IgG
Clonality	Polyclonal
Alias	Kallikrein-14 (hK14) (EC 3.4.21.-) (Kallikrein-like protein 6) (KLK-L6), KLK14, KLKL6
Immunogen Species	Homo sapiens (Human)
Research Area	Tags & Cell Markers
Target Names	KLK14

Image



IHC image of CSB-PA868375LA01HU diluted at 1:200 and staining in paraffin-embedded human lung tissue performed on a Leica BondTM system. After dewaxing and hydration, antigen retrieval was mediated by high pressure in a citrate buffer (pH 6.0). Section was blocked with 10% normal goat serum 30min at RT. Then primary antibody (1% BSA) was incubated at 4°C overnight. The primary is detected by a biotinylated secondary antibody and visualized using an HRP conjugated SP system.