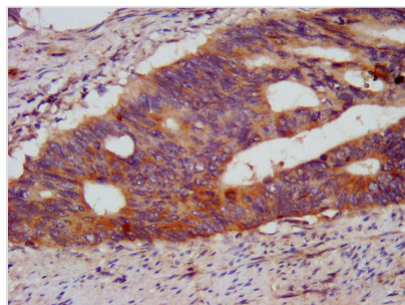




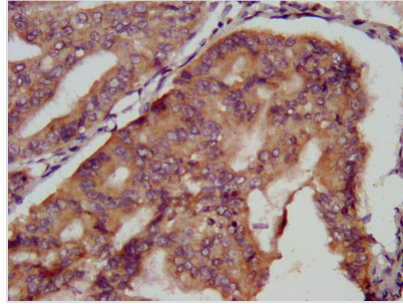
KCMF1 Antibody

Product Code	CSB-PA873718LA01HU
Storage	Upon receipt, store at -20°C or -80°C. Avoid repeated freeze.
Uniprot No.	Q9P0J7
Immunogen	Recombinant Human E3 ubiquitin-protein ligase KCMF1 protein (98-226AA)
Raised In	Rabbit
Species Reactivity	Human
Tested Applications	ELISA, IHC; Recommended dilution: IHC:1:500-1:1000
Form	Liquid
Conjugate	Non-conjugated
Storage Buffer	Preservative: 0.03% Proclin 300 Constituents: 50% Glycerol, 0.01M PBS, pH 7.4
Purification Method	>95%, Protein G purified
Isotype	IgG
Clonality	Polyclonal
Alias	E3 ubiquitin-protein ligase KCMF1 (EC 2.3.2.27) (FGF-induced in gastric cancer) (Potassium channel modulatory factor) (PCMF) (RING-type E3 ubiquitin transferase KCMF1) (ZZ-type zinc finger-containing protein 1), KCMF1, FIGC ZZZ1
Immunogen Species	Homo sapiens (Human)
Research Area	Signal Transduction
Target Names	KCMF1

Image



IHC image of CSB-PA873718LA01HU diluted at 1:500 and staining in paraffin-embedded human colon cancer performed on a Leica Bond™ system. After dewaxing and hydration, antigen retrieval was mediated by high pressure in a citrate buffer (pH 6.0). Section was blocked with 10% normal goat serum 30min at RT. Then primary antibody (1% BSA) was incubated at 4°C overnight. The primary is detected by a biotinylated secondary antibody and visualized using an HRP conjugated SP system.



IHC image of CSB-PA873718LA01HU diluted at 1:500 and staining in paraffin-embedded human endometrial cancer performed on a Leica Bond™ system. After dewaxing and hydration, antigen retrieval was mediated by high pressure in a citrate buffer (pH 6.0). Section was blocked with 10% normal goat serum 30min at RT. Then primary antibody (1% BSA) was incubated at 4°C overnight. The primary is detected by a biotinylated secondary antibody and visualized using an HRP conjugated SP system.

Usage

For Research Use Only. Not for use in diagnostic or therapeutic procedures.