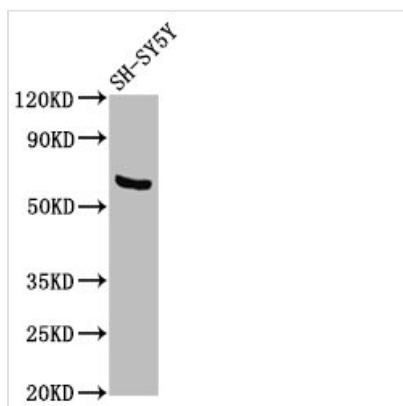




PDP1 Antibody

Product Code	CSB-PA878946LA01HU
Storage	Upon receipt, store at -20°C or -80°C. Avoid repeated freeze.
Uniprot No.	Q9P0J1
Immunogen	Recombinant Human [Pyruvate dehydrogenase [acetyl-transferring]]-phosphatase 1, mitochondrial protein (1-154AA)
Raised In	Rabbit
Species Reactivity	Human
Tested Applications	ELISA, WB, IHC; Recommended dilution: WB:1:500-1:5000, IHC:1:500-1:1000
Form	Liquid
Conjugate	Non-conjugated
Storage Buffer	Preservative: 0.03% Proclin 300 Constituents: 50% Glycerol, 0.01M PBS, pH 7.4
Purification Method	>95%, Protein G purified
Isotype	IgG
Clonality	Polyclonal
Alias	[Pyruvate dehydrogenase [acetyl-transferring]]-phosphatase 1, mitochondrial (PDP 1) (EC 3.1.3.43) (Protein phosphatase 2C) (Pyruvate dehydrogenase phosphatase catalytic subunit 1) (PDPC 1), PDP1, PDP PPM2C
Immunogen Species	Homo sapiens (Human)
Research Area	Tags & Cell Markers
Target Names	PDP1

Image



Western Blot

Positive WB detected in: SH-SY5Y whole cell lysate

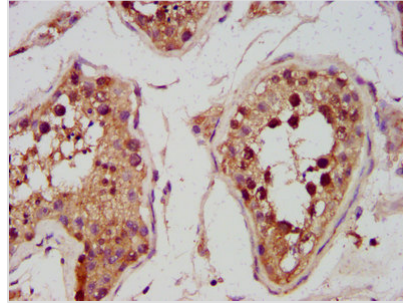
All lanes: PDP1 antibody at 3.6µg/ml

Secondary

Goat polyclonal to rabbit IgG at 1/50000 dilution

Predicted band size: 62, 64 kDa

Observed band size: 62 kDa



IHC image of CSB-PA878946LA01HU diluted at 1:600 and staining in paraffin-embedded human testis tissue performed on a Leica Bond™ system. After dewaxing and hydration, antigen retrieval was mediated by high pressure in a citrate buffer (pH 6.0). Section was blocked with 10% normal goat serum 30min at RT. Then primary antibody (1% BSA) was incubated at 4°C overnight. The primary is detected by a biotinylated secondary antibody and visualized using an HRP conjugated SP system.

Usage

For Research Use Only. Not for use in diagnostic or therapeutic procedures.