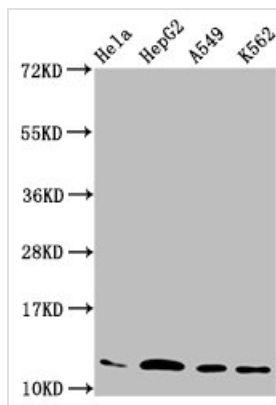




HIST1H4A (Ab-12) Antibody

Product Code	CSB-PA010429OA12ncrHU
Storage	Upon receipt, store at -20°C or -80°C. Avoid repeated freeze.
Uniprot No.	P62805
Immunogen	Peptide sequence around site of Lys (12) derived from Human Histone H4
Raised In	Rabbit
Species Reactivity	Human
Tested Applications	ELISA, WB, IF, IP; Recommended dilution: WB:1:50-1:500, IF:1:1-1:10, IP:1:200-1:2000
Form	Liquid
Conjugate	Non-conjugated
Storage Buffer	Preservative: 0.03% Proclin 300 Constituents: 50% Glycerol, 0.01M PBS, pH 7.4
Purification Method	Antigen Affinity Purified
Isotype	IgG
Clonality	Polyclonal
Alias	Histone H4, HIST1H4A; HIST1H4B; HIST1H4C; HIST1H4D; HIST1H4E; HIST1H4F; HIST1H4H; HIST1H4I; HIST1H4J; HIST1H4K; HIST1H4L; HIST2H4A; HIST2H4B; HIST4H4, H4/A H4FA; H4/I H4FI; H4/G H4FG; H4/B H4FB; H4/J H4FJ; H4/C H4FC; H4/H H4FH; H4/M H4FM; H4/E H4FE; H4/D H4FD; H4/K H4FK; H4/N H4F2 H4FN HIST2H4; H4/O H4FO;
Immunogen Species	Homo sapiens (Human)
Research Area	Epigenetics and Nuclear Signaling
Target Names	HIST1H4A

Image



Western Blot

Positive WB detected in: HeLa whole cell lysate, HepG2 whole cell lysate, A549 whole cell lysate, K562 whole cell lysate

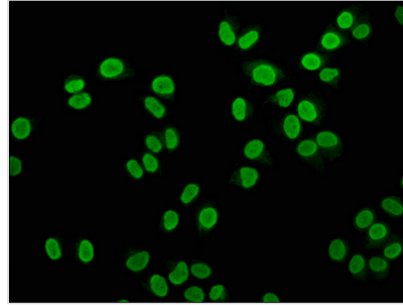
All lanes: HIST1H4A antibody at 2.2µg/ml

Secondary

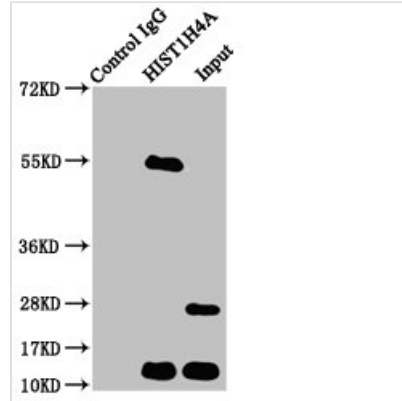
Goat polyclonal to rabbit IgG at 1/50000 dilution

Predicted band size: 12 kDa

Observed band size: 12 kDa



Immunofluorescence staining of HeLa cells with CSB-PA010429OA12ncrHU at 1:2.5, counter-stained with DAPI. The cells were fixed in 4% formaldehyde, permeabilized using 0.2% Triton X-100 and blocked in 10% normal Goat Serum. The cells were then incubated with the antibody overnight at 4°C. The secondary antibody was Alexa Fluor 488-conjugated AffiniPure Goat Anti-Rabbit IgG(H+L).



Immunoprecipitating H1ST1H4A in HepG2 whole cell lysate

Lane 1: Rabbit control IgG instead of CSB-PA010429OA12ncrHU in HepG2 whole cell lysate. For western blotting, a HRP-conjugated Protein G antibody was used as the secondary antibody (1/2000)

Lane 2: CSB-PA010429OA12ncrHU (5μg) + HepG2 whole cell lysate (500μg)

Lane 3: HepG2 whole cell lysate (20μg)

Usage

For Research Use Only. Not for use in diagnostic or therapeutic procedures.