



# Recombinant Escherichia coli Constitutive lysine decarboxylase (IdcC) (Active)

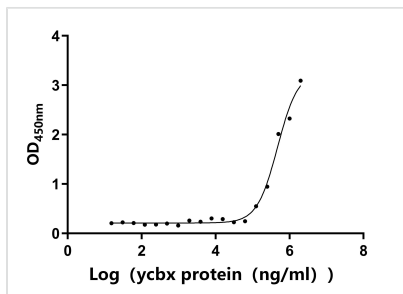
<b>Product Code</b>	CSB-EP345171ENVc7
<b>Relevance</b>	LDC is constitutively but weakly expressed under various conditions.
<b>Abbreviation</b>	Recombinant E.coli IdcC protein (Active)
<b>Storage</b>	The shelf life is related to many factors, storage state, buffer ingredients, storage temperature and the stability of the protein itself. Generally, the shelf life of liquid form is 6 months at -20°C/-80°C. The shelf life of lyophilized form is 12 months at -20°C/-80°C.
<b>Uniprot No.</b>	P52095
<b>Storage Buffer</b>	Tris-based buffer,50% glycerol
<b>Product Type</b>	Others
<b>Immunogen Species</b>	Escherichia (strain K12)
<b>Biological Activity</b>	Measured by its binding ability in a functional ELISA. Immobilized IdcC at 5 µg/ml can bind Escherichia coli ycbX, the EC50 of Escherichia coli ycbX protein is 359.062 - 628.116 µg/ml.
<b>Purity</b>	Greater than 85% as determined by SDS-PAGE.
<b>Sequence</b>	MNIIAIMGPHGVFYKDEPIKELESALVAQGFQIIWPQNSVDLLKFIEHNPRICGVI FDWDEYSLDLCSDINQLNEYLPYAFINTHSTMDVSVQDMRMALWFFEYALG QAEDIAIRMRQYTDEYLDNITPPFTKALFTYVKERKYTFCTPGHMGGTAYQKSP VGCLFYDFFGGNTLKADVSI SVTELGSLLDHTGPHLEAEEYIARTFGAEQSYIVT NGTSTSNKIVGMYAAPSGSTLLIDRNCHKSLAHLMMNDVVPVWLKPTRNALG ILGGIPRREFTRDSIEEKVAATTQAQWPVHAVITNSTYDGLLYNTDWIKQTLDV PSIHFDASAWVPYTHFHPIYQKGSGMSGERVAGKVIFETQSTHKMLAALSQASLI HIKGEYDEEAFNEAFMMHTTTSPSYPIVASVETAAMLRGNPGKRLINRSVER ALHFRKEVQRLREESDQWFFDIWQPPQVDEAECPVAPGEQWHGFNDADA DHMFLDPVKVTILTPGMDEQGNMSEEGIPAALVAKFLDERGIVVEKTGPYNLLF LFSIGIDKTKAMGLLRGLTEFKRSYDLNLRIKNMLPDLAEDPDFYRNMRIQDLA QGIHKLIRKHDLPGLMLRAFDLPEMIMTPHQAWQRQIKGEVETIALEQLVGRV SANMILPYPPGVPLLMPGEMLTKESTRVLDLFLMLCSVGQHYPGFETDIHGAK QDEDGVYRVRVLKMAG
<b>Research Area</b>	Others
<b>Source</b>	E.coli
<b>Target Names</b>	IdcC
<b>Expression Region</b>	1-713aa
<b>Notes</b>	Repeated freezing and thawing is not recommended. Store working aliquots at 4°C for up to one week.
<b>Tag Info</b>	C-terminal 6xHis-tagged



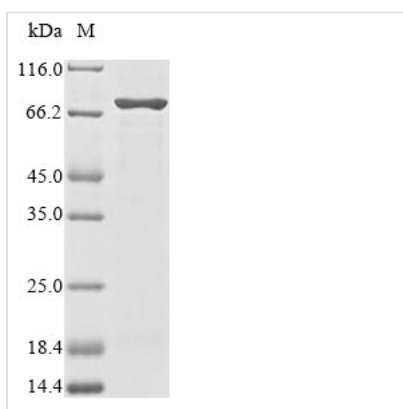
**Mol. Weight** 81.8 kDa

**Protein Length** Full Length

**Image**



Measured by its binding ability in a functional ELISA. Immobilized IdcC at 5 µg/ml can bind Escherichia coli ycbX, the EC50 of Escherichia coli ycbX protein is 359.062 - 628.116 µg/ml.



(Tris-Glycine gel) Discontinuous SDS-PAGE (reduced) with 5% enrichment gel and 15% separation gel.

**Shelf Life**

The shelf life is related to many factors, storage state, buffer ingredients, storage temperature and the stability of the protein itself. Generally, the shelf life of liquid form is 6 months at -20°C/-80°C. The shelf life of lyophilized form is 12 months at -20°C/-80°C.