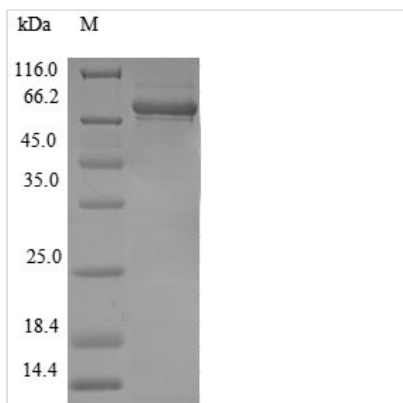
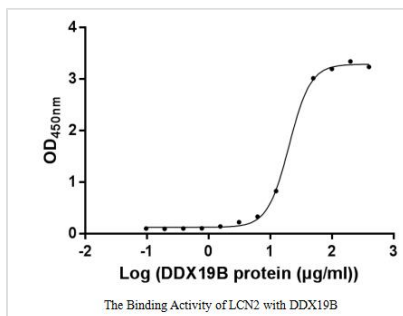




Recombinant Human ATP-dependent RNA helicase DDX19B (DDX19B) (Active)

| | |
|----------------------------|--|
| Product Code | CSB-EPCSB-EP892352HU |
| Relevance | ATP-dependent RNA helicase involved in mRNA export from the nucleus. Rather than unwinding RNA duplexes, DDX19B functions as a remodeler of ribonucleoprotein particles, whereby proteins bound to nuclear mRNA are dissociated and replaced by cytoplasmic mRNA binding proteins. |
| Storage | The shelf life is related to many factors, storage state, buffer ingredients, storage temperature and the stability of the protein itself. Generally, the shelf life of liquid form is 6 months at -20°C/-80°C. The shelf life of lyophilized form is 12 months at -20°C/-80°C. |
| Uniprot No. | Q9UMR2 |
| Storage Buffer | Tris-based buffer,50% glycerol |
| Product Type | Others |
| Immunogen Species | Homo sapiens (Human) |
| Biological Activity | Measured by its binding ability in a functional ELISA. Immobilized LCN2 at 2 µg/ml can bind human DDX19B, the EC50 of human DDX19B protein is 17.71-23.15 µg/ml. |
| Purity | Greater than 85% as determined by SDS-PAGE. |
| Sequence | ATDSWALAVDEQEAAAESLSNLHLKEEKIKPDTNGAVVKTNANA EKTDEEEKE DRAAQSLNKLIRSNLVDNTNQVEVLQRDPNSPLYSVKSFEELRLKPQLLQGV YAMGFNRPSKIQENALPLMLAEPQNLIAQSQSGTGKTA AFVLAMLSQVEPAN KYPQCLCLSPTYELALQTGK VIEQMKGFPYELKLAYAVRGNKLERGQKISEQIV IGTPGTVLDWCSKLFIDPKKIKV FVLDEADVM IATQGHQDQSIRIQRMLPRNC QMLLFSATFEDSVWKFAQKVVPDPNVIKLKREEETLDTIKQYYVLCSSRDEKF QALCNLYGAITIAQAMIFCHTRKTASWLA AELSKEGHQVALLSGEMMVEQRAA VIERFREGKEKVLVTTNVCARGIDVEQVSVVINFDLPVDKDGNDPNETYLHRIG RTGRFGKRGLAVNMVDSKHS MNILNRIQEHFNKKIERLDTDDLDEIEKIAN |
| Research Area | Signal Transduction |
| Source | E.coli |
| Target Names | DDX19B |
| Expression Region | 2-479aa |
| Notes | Repeated freezing and thawing is not recommended. Store working aliquots at 4°C for up to one week. |
| Tag Info | Tag type will be determined during the manufacturing process. |
| Protein Length | Full Length of Mature Protein |
| Image | |



(Tris-Glycine gel) Discontinuous SDS-PAGE (reduced) with 5% enrichment gel and 15% separation gel.

Reconstitution

We recommend that this vial be briefly centrifuged prior to opening to bring the contents to the bottom. Please reconstitute protein in deionized sterile water to a concentration of 0.1-1.0 mg/mL. We recommend to add 5-50% of glycerol (final concentration) and aliquot for long-term storage at -20°C/-80°C. Our default final concentration of glycerol is 50%. Customers could use it as reference.

Shelf Life

The shelf life is related to many factors, storage state, buffer ingredients, storage temperature and the stability of the protein itself. Generally, the shelf life of liquid form is 6 months at -20°C/-80°C. The shelf life of lyophilized form is 12 months at -20°C/-80°C.