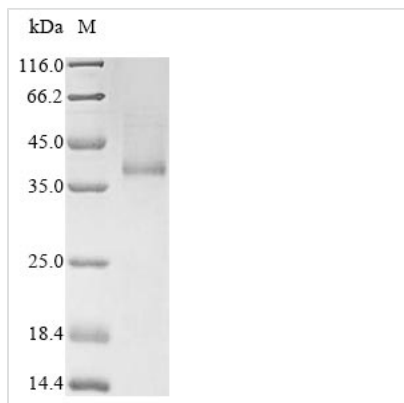




Recombinant Human Blood group Rh (D) polypeptide (RHD)

Product Code	CSB-CF019677HU(A4)
Relevance	May be part of an oligomeric complex which is likely to have a transport or channel function in the erythrocyte membrane.
Abbreviation	Recombinant Human RHD protein
Storage	The shelf life is related to many factors, storage state, buffer ingredients, storage temperature and the stability of the protein itself. Generally, the shelf life of liquid form is 6 months at -20°C/-80°C. The shelf life of lyophilized form is 12 months at -20°C/-80°C.
Uniprot No.	Q02161
Product Type	Transmembrane Protein
Immunogen Species	Homo sapiens (Human)
Purity	≥ 85% as determined by SDS-PAGE.
Sequence	SSKYPRSVRRCLPLWALTLEAAILLLFYFFTHYDASLEDQKGLVASVYQVGGDLT VMAAIGLGLTSSFRHSWSSVAFNLFMLALGVQWAILLDGFLSQFSPGKVVIT LFSIRLATMSALSVLISVDAVLGKVNLAQLVVMVLVEVTALGNLRMVISNIFNTD YHMNMMHIYVFAAYFGLSVAVWCLPKPLPEGTEKDKQTATIPSLSAMLGALFLW MFWPSFNSALLRSPIERKNAVFNTYYAVAVSVVTAISGSSLAHPQGKISKTYVH SAVLAGGVAVGTSCHLIPSPWLAMVLGLVAGLISVGGAKYLPGCCNRVLGIPH SSIMGYNFSLLGLLGEIYIVLLVLDTVGAGNGMIGFQVLLSIGELSLAIVIALMSG LLTGILLNLKIWKAPHEAKYFDDQVFWKFPHLAVGF
Research Area	Cardiovascular
Source	in vitro E.coli expression system
Target Names	RHD
Protein Names	RHXIIIRh polypeptide 2Short name:RhPIIRhesus D antigenCD_antigen: CD240D
Expression Region	2-417aa
Notes	Repeated freezing and thawing is not recommended. Store working aliquots at 4°C for up to one week.
Tag Info	C-terminal 10xHis-tagged
Mol. Weight	47.9 kDa
Protein Length	Full Length of Mature Protein
Image	



(Tris-Glycine gel) Discontinuous SDS-PAGE (reduced) with 5% enrichment gel and 15% separation gel.

Reconstitution

We recommend that this vial be briefly centrifuged prior to opening to bring the contents to the bottom. Please reconstitute protein in deionized sterile water to a concentration of 0.1-1.0 mg/mL. We recommend to add 5-50% of glycerol (final concentration) and aliquot for long-term storage at -20°C/-80°C. Our default final concentration of glycerol is 50%. Customers could use it as reference.

Shelf Life

The shelf life is related to many factors, storage state, buffer ingredients, storage temperature and the stability of the protein itself. Generally, the shelf life of liquid form is 6 months at -20°C/-80°C. The shelf life of lyophilized form is 12 months at -20°C/-80°C.