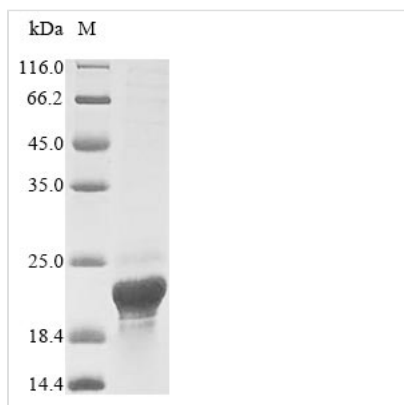




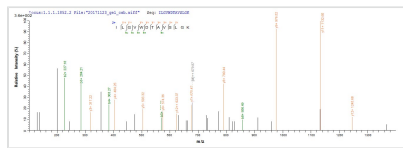
Recombinant Human Retroviral-like aspartic protease 1 (ASPRV1)

Product Code	CSB-CF684475HU
Abbreviation	Recombinant Human ASPRV1 protein
Storage	The shelf life is related to many factors, storage state, buffer ingredients, storage temperature and the stability of the protein itself. Generally, the shelf life of liquid form is 6 months at -20°C/-80°C. The shelf life of lyophilized form is 12 months at -20°C/-80°C.
Uniprot No.	Q53RT3
Product Type	Transmembrane Protein
Immunogen Species	Homo sapiens (Human)
Purity	Greater than 85% as determined by SDS-PAGE.
Sequence	SMGKGYLKGKIGKVPVRFLVDSGAQVSVVHPNLWEEVTDGDLDTLQPFENV VKVANGAEMKILGVWDTAVSLGKCLKLKAQFLVANASAEAAIIGTDVLQDHNAIL DFEHRCTCLKGKKFRLLPVGGSLEDEFDLE
Research Area	Cell Biology
Source	in vitro E.coli expression system
Target Names	ASPRV1
Protein Names	Skin-specific retroviral-like aspartic protease Short name: SASPase Short name: Skin aspartic protease TPA-inducible aspartic proteinase-like protein Short name: TAPS SASP
Expression Region	191-326aa
Notes	Repeated freezing and thawing is not recommended. Store working aliquots at 4°C for up to one week.
Tag Info	N-terminal 10xHis-tagged and C-terminal Myc-tagged
Mol. Weight	19.9 kDa
Protein Length	Full Length of Mature Protein

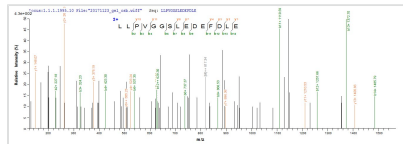
Image



(Tris-Glycine gel) Discontinuous SDS-PAGE (reduced) with 5% enrichment gel and 15% separation gel.



Based on the SEQUEST from database of E.coli host and target protein, the LC-MS/MS Analysis result of CSB-CF684475HU could indicate that this peptide derived from E.coli-expressed Homo sapiens (Human) ASPRV1.



Based on the SEQUEST from database of E.coli host and target protein, the LC-MS/MS Analysis result of CSB-CF684475HU could indicate that this peptide derived from E.coli-expressed Homo sapiens (Human) ASPRV1.

Reconstitution

We recommend that this vial be briefly centrifuged prior to opening to bring the contents to the bottom. Please reconstitute protein in deionized sterile water to a concentration of 0.1-1.0 mg/mL. We recommend to add 5-50% of glycerol (final concentration) and aliquot for long-term storage at -20°C/-80°C. Our default final concentration of glycerol is 50%. Customers could use it as reference.

Shelf Life

The shelf life is related to many factors, storage state, buffer ingredients, storage temperature and the stability of the protein itself. Generally, the shelf life of liquid form is 6 months at -20°C/-80°C. The shelf life of lyophilized form is 12 months at -20°C/-80°C.