



Recombinant Human Glutamate receptor ionotropic, NMDA 1 (GRIN1), partial

Product Code	CSB-EP009911HU
Relevance	Component of NMDA receptor complexes that function as heterotetrameric, ligand-gated ion channels with high calcium permeability and voltage-dependent sensitivity to magnesium. Channel activation requires binding of the neurotransmitter glutamate to the epsilon subunit, glycine binding to the zeta subunit, plus membrane depolarization to eliminate channel inhibition by Mg ²⁺ . Sensitivity to glutamate and channel kinetics depend on the subunit composition
Abbreviation	Recombinant Human GRIN1 protein, partial
Storage	The shelf life is related to many factors, storage state, buffer ingredients, storage temperature and the stability of the protein itself. Generally, the shelf life of liquid form is 6 months at -20°C/-80°C. The shelf life of lyophilized form is 12 months at -20°C/-80°C.
Uniprot No.	Q05586
Storage Buffer	Tris-based buffer, 50% glycerol
Product Type	Recombinant Proteins
Immunogen Species	Homo sapiens (Human)
Purity	≥ 90% as determined by SDS-PAGE.
Sequence	RAACDPKIVNIGAVLSTRKHEQMFREAVNQANKRHGSKWIKLQNLNATSVTHKPNA IQMALSVCEDLISSQVYAILVSHPTTPNDHFTPTVSYTAGFYRIPVLGLTTRMS IYSDKSIHLSFLRTVPPYSHQSSVWFEMMRVYSWNHILLVSDDHEGRAAQKR LETLLEERESKAEKVLQFDPGTKNVTALLMEAKELEARVIILSASEDDAATVYRA AAMLNMTGSGYVWLVGEREISGNALRYAPDGILGLQLINGKNESAHISDAVGV VAQAVHELLEKENITDPPRGCVGNTNIWKTGPLFKRVLMSKYADGVTGRVEF NEDGDRKFANYSIMNLQNRKLVQVGIYNGTHVIPNDRKIIWPGGETEKPRGYQ MSTRLKIVTIHQEPFVYVKPTLSDGTCKEEFTVNGDPVKKVICTGPNDTSPGSP RHTVPQCCYGFCIDLLIKLARTMNFTYEVHLVADGKFGTQERVNNSNKKEWN GMMGELLSGQADMIVAPLTINNERAQYIEFSKPFKYQGLTILVKKEIPRSTLDSF MQPFQ
Research Area	Neuroscience
Source	E.coli
Target Names	GRIN1
Protein Names	Glutamate [NMDA] receptor subunit zeta-1N-methyl-D-aspartate receptor subunit NR1 Short name: NMD-R1 NMDAR1
Expression Region	19-559aa
Notes	Repeated freezing and thawing is not recommended. Store working aliquots at 4°C for up to one week.

**Tag Info**

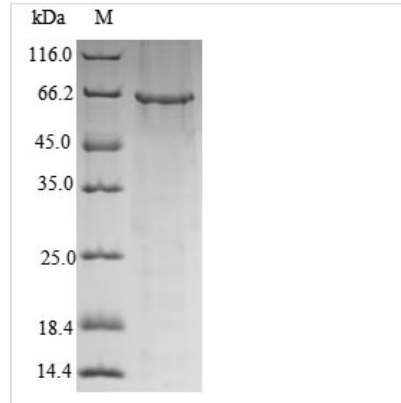
N-terminal 6xHis-tagged

Mol. Weight

64.6 kDa

Protein Length

Partial

Image

(Tris-Glycine gel) Discontinuous SDS-PAGE (reduced) with 5% enrichment gel and 15% separation gel.

Shelf Life

The shelf life is related to many factors, storage state, buffer ingredients, storage temperature and the stability of the protein itself.

Generally, the shelf life of liquid form is 6 months at -20°C/-80°C. The shelf life of lyophilized form is 12 months at -20°C/-80°C.