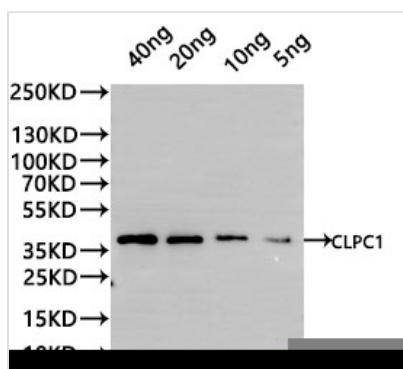




CLPC1 Antibody

Product Code	CSB-PA863761XA01DOA
Storage	Upon receipt, store at -20°C or -80°C. Avoid repeated freeze.
Uniprot No.	Q9FI56
Immunogen	Recombinant Arabidopsis thaliana CLPC1 protein (257-504aa)
Raised In	Rabbit
Species Reactivity	Arabidopsis thaliana (Mouse-ear cress)
Tested Applications	ELISA, WB; Recommended dilution: WB:1:500-1:5000
Form	Liquid
Conjugate	Non-conjugated
Storage Buffer	Preservative: 0.03% Proclin 300 Constituents: 50% Glycerol, 0.01M PBS, pH 7.4
Purification Method	Antigen Affinity Purified
Isotype	IgG
Clonality	Polyclonal
Product Type	Polyclonal Antibody
Immunogen Species	Arabidopsis thaliana (Mouse-ear cress)
Target Names	CLPC1

Image



Western Blot

Positive WB detected in: recombinant protein

All lanes:CLPC1 Antibody at 1:1000

Secondary

Goat polyclonal to rabbit IgG at 1/20000 dilution

Predicted band size: 34.5 kDa

Observed band size: 37 kDa

Exposure time: 10s.

Usage

For Research Use Only. Not for use in diagnostic or therapeutic procedures.