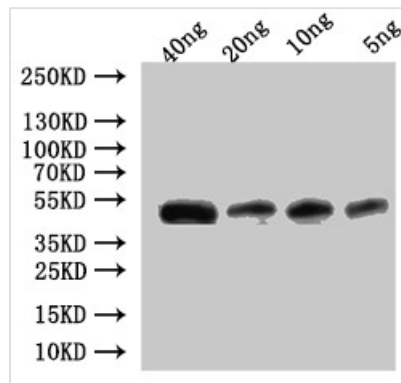




Ctl2 Antibody

Product Code	CSB-PA894662XA01DLU
Storage	Upon receipt, store at -20°C or -80°C. Avoid repeated freeze.
Uniprot No.	Q9VAP3
Immunogen	Recombinant Drosophila melanogaster (Fruit fly) Ctl2 protein (56-303aa)
Raised In	Rabbit
Species Reactivity	Drosophila melanogaster (Fruit fly)
Tested Applications	ELISA, WB; Recommended dilution: WB:1:500-1:5000
Form	Liquid
Conjugate	Non-conjugated
Storage Buffer	Preservative: 0.03% Proclin 300 Constituents: 50% Glycerol, 0.01M PBS, pH 7.4
Purification Method	>95%, Protein G purified
Isotype	IgG
Clonality	Polyclonal
Product Type	Polyclonal Antibody
Immunogen Species	Drosophila melanogaster (Fruit fly)
Target Names	Ctl2 Antibody

Image



Western Blot

Positive WB detected in: recombinant protein

All lanes: Ctl2 Antibody at 1:1000

Secondary

Goat polyclonal to rabbit IgG at 1/50000 dilution

Predicted band size: 43.5 kDa

Observed band size: 45 kDa

Usage

For Research Use Only. Not for use in diagnostic or therapeutic procedures.