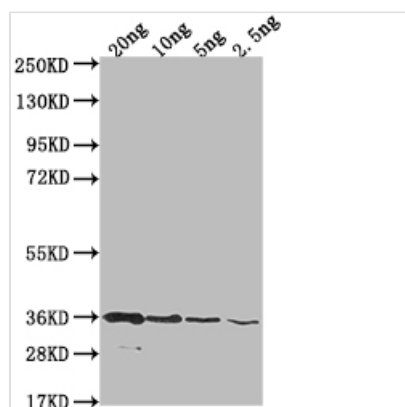




# BAME Antibody

<b>Product Code</b>	CSB-PA359239XA01ENV
<b>Storage</b>	Upon receipt, store at -20°C or -80°C. Avoid repeated freeze.
<b>Uniprot No.</b>	P0A937
<b>Immunogen</b>	Recombinant Escherichia coli (strain K12) BAME protein (20-113aa)
<b>Species Reactivity</b>	Escherichia coli (strain K12)
<b>Tested Applications</b>	ELISA, WB
<b>Form</b>	Liquid
<b>Conjugate</b>	Non-conjugated
<b>Storage Buffer</b>	Preservative: 0.03% Proclin 300 Constituents: 50% Glycerol, 0.01M PBS, pH 7.4
<b>Purification Method</b>	Protein G
<b>Isotype</b>	IgG
<b>Clonality</b>	Polyclonal
<b>Product Type</b>	Polyclonal Antibody
<b>Immunogen Species</b>	Escherichia coli (strain K12)
<b>Target Names</b>	BAME

## Image



### Western Blot

Positive WB detected in Recombinant protein  
 All lanes: BAME antibody at 1:2000  
 Secondary  
 Goat polyclonal to rabbit IgG at 1/50000 dilution  
 Predicted band size: 97.1 kDa  
 Observed band size: 34 kDa

## Usage

For Research Use Only. Not for use in diagnostic or therapeutic procedures.