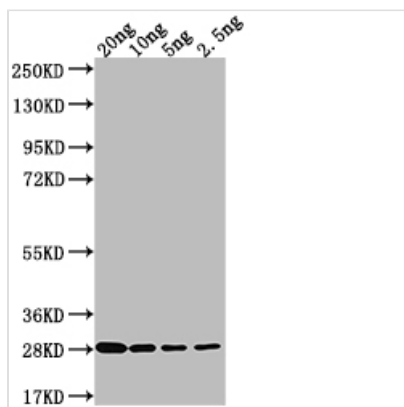




LPTD Antibody

Product Code	CSB-PA327058XA01ENV
Storage	Upon receipt, store at -20°C or -80°C. Avoid repeated freeze.
Uniprot No.	P31554
Immunogen	Recombinant Escherichia coli (strain K12) LPTD protein
Species Reactivity	Escherichia coli (strain K12)
Tested Applications	ELISA, WB
Form	Liquid
Conjugate	Non-conjugated
Storage Buffer	Preservative: 0.03% Proclin 300 Constituents: 50% Glycerol, 0.01M PBS, pH 7.4
Purification Method	Protein G
Isotype	IgG
Clonality	Polyclonal
Product Type	Polyclonal Antibody
Immunogen Species	Escherichia coli (strain K12)
Target Names	LPTD

Image



Western Blot

Positive WB detected in Recombinant protein

All lanes: LPTD antibody at 1:2000

Secondary

Goat polyclonal to rabbit IgG at 1/50000 dilution

Predicted band size: 26.3 kDa

Observed band size: 28.1 kDa

Usage

For Research Use Only. Not for use in diagnostic or therapeutic procedures.