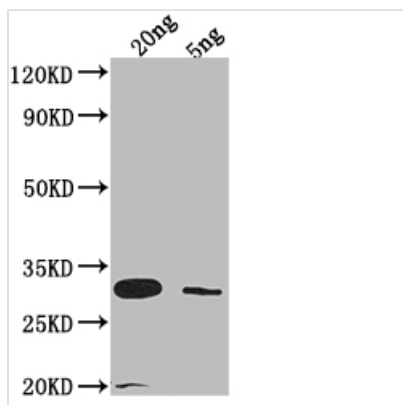




LAMB Antibody

Product Code	CSB-PA365810XA01ENV
Storage	Upon receipt, store at -20°C or -80°C. Avoid repeated freeze.
Uniprot No.	P02943
Immunogen	Recombinant Escherichia coli (strain K12) LAMB protein
Raised In	Rabbit
Species Reactivity	Escherichia coli (strain K12)
Tested Applications	ELISA, WB
Form	Liquid
Conjugate	Non-conjugated
Storage Buffer	Preservative: 0.03% Proclin 300 Constituents: 50% Glycerol, 0.01M PBS, pH 7.4
Purification Method	Protein A/G
Isotype	IgG
Clonality	Polyclonal
Product Type	Polyclonal Antibody
Immunogen Species	Escherichia coli (strain K12)
Target Names	lamB

Image



Western Blot

Positive WB detected in Recombinant protein

All lanes: LAMB antibody at 1:2000

Secondary

Goat polyclonal to rabbit IgG at 1/50000 dilution

Predicted band size: 29.8 kDa

Observed band size: 31 kDa

Usage

For Research Use Only. Not for use in diagnostic or therapeutic procedures.