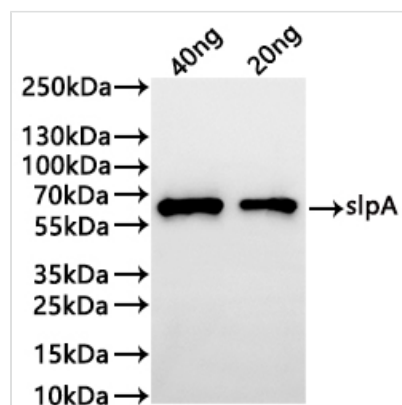




# slpA Antibody

<b>Product Code</b>	CSB-PA334032XA01LME
<b>Storage</b>	Upon receipt, store at -20°C or -80°C. Avoid repeated freeze.
<b>Uniprot No.</b>	P35829
<b>Immunogen</b>	Recombinant Lactobacillus acidophilus (strain ATCC 700396 / NCK56 / N2 / NCFM) slpA protein (25-444aa)
<b>Raised In</b>	Rabbit
<b>Species Reactivity</b>	Lactobacillus acidophilus (strain ATCC 700396 / NCK56 / N2 / NCFM)
<b>Tested Applications</b>	ELISA, WB; Recommended dilution: WB:1:500-1:5000
<b>Form</b>	Liquid
<b>Conjugate</b>	Non-conjugated
<b>Storage Buffer</b>	Preservative: 0.03% Proclin 300 Constituents: 50% Glycerol, 0.01M PBS, pH 7.4
<b>Purification Method</b>	Antigen Affinity Purified
<b>Isotype</b>	IgG
<b>Clonality</b>	Polyclonal
<b>Product Type</b>	Polyclonal Antibody
<b>Immunogen Species</b>	Lactobacillus acidophilus (strain ATCC 700396 / NCK56 / N2 / NCFM)
<b>Target Names</b>	slpA

## Image



### Western Blot

Positive WB detected in: recombinant protein

All lanes:slpA Antibody at 1:1000

Secondary

Goat polyclonal to rabbit IgG at 1/20000 dilution

Predicted band size: 51.7 kDa

Observed band size: 60 kDa

## Usage

For Research Use Only. Not for use in diagnostic or therapeutic procedures.