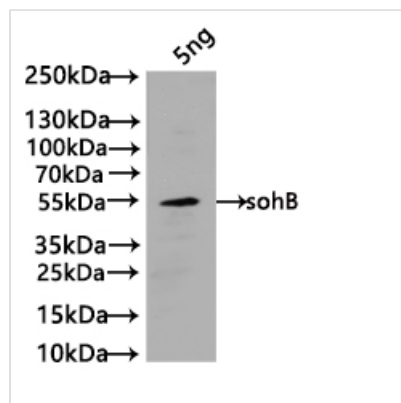




sohB Antibody

Product Code	CSB-PA365391XA01ENV
Storage	Upon receipt, store at -20°C or -80°C. Avoid repeated freeze.
Uniprot No.	P0AG14
Immunogen	Recombinant Escherichia coli (strain K12) sohB protein (30-349)
Raised In	Rabbit
Species Reactivity	Escherichia coli (strain K12)
Tested Applications	ELISA, WB; Recommended dilution: WB:1:500-1:5000
Form	Liquid
Conjugate	Non-conjugated
Storage Buffer	Preservative: 0.03% Proclin 300 Constituents: 50% Glycerol, 0.01M PBS, pH 7.4
Purification Method	>95%, Protein G purified
Isotype	IgG
Clonality	Polyclonal
Product Type	Polyclonal Antibody
Immunogen Species	Escherichia coli (strain K12)
Target Names	sohB Antibody

Image



Western Blot

Positive WB detected in: recombinant protein

All lanes:sohB Antibody at 1:1000

Secondary

Goat polyclonal to rabbit IgG at 1/50000 dilution

Predicted band size: 52 kDa

Observed band size: 52 kDa

Usage

For Research Use Only. Not for use in diagnostic or therapeutic procedures.