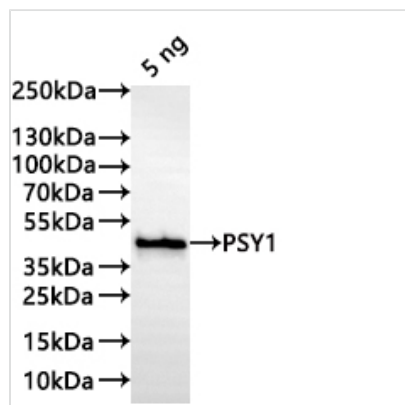




PSY1 Antibody

Product Code	CSB-PA341797XA01ZAX
Storage	Upon receipt, store at -20°C or -80°C. Avoid repeated freeze.
Uniprot No.	P49085
Immunogen	Recombinant Zea mays (Maize) PSY1 protein (120-387aa)
Raised In	Rabbit
Species Reactivity	Zea mays (Maize)
Tested Applications	ELISA, WB; Recommended dilution: WB:1:500-1:5000
Form	Liquid
Conjugate	Non-conjugated
Storage Buffer	Preservative: 0.03% Proclin 300 Constituents: 50% Glycerol, 0.01M PBS, pH 7.4
Purification Method	Antigen Affinity Purified
Isotype	IgG
Clonality	Polyclonal
Product Type	Polyclonal Antibody
Immunogen Species	Zea mays (Maize)
Target Names	PSY1

Image



Western Blot

Positive WB detected in: recombinant protein

All lanes: PSY1 Antibody at 1:1000

Secondary

Goat polyclonal to rabbit IgG at 1/20000 dilution

Predicted band size: 38.1 kDa

Observed band size: 39 kDa

Usage

For Research Use Only. Not for use in diagnostic or therapeutic procedures.