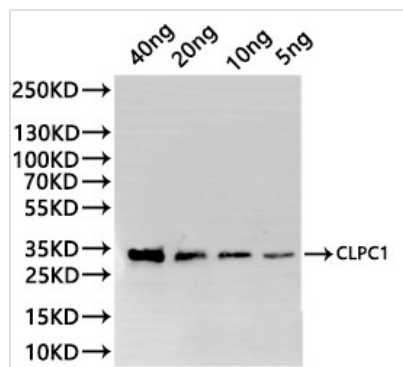




CLPC1 Antibody

Product Code	CSB-PA748663XA01OFG
Storage	Upon receipt, store at -20°C or -80°C. Avoid repeated freeze.
Uniprot No.	Q7F9I1
Immunogen	Recombinant Oryza sativa subsp. japonica (Rice) CLPC1 protein (751-918aa)
Raised In	Rabbit
Species Reactivity	Oryza sativa subsp. japonica (Rice)
Tested Applications	ELISA, WB; Recommended dilution: WB:1:500-1:5000
Form	Liquid
Conjugate	Non-conjugated
Storage Buffer	Preservative: 0.03% Proclin 300 Constituents: 50% Glycerol, 0.01M PBS, pH 7.4
Purification Method	Antigen Affinity Purified
Isotype	IgG
Clonality	Polyclonal
Product Type	Polyclonal Antibody
Immunogen Species	Oryza sativa subsp. japonica (Rice)
Target Names	CLPC1

Image



Western Blot

Positive WB detected in: recombinant protein

All lanes:CLPC1 Antibody at 1:1000

Secondary

Goat polyclonal to rabbit IgG at 1/20000 dilution

Predicted band size: 25.8 kDa

Observed band size: 31 kDa

Exposure time: 10s.

Usage

For Research Use Only. Not for use in diagnostic or therapeutic procedures.