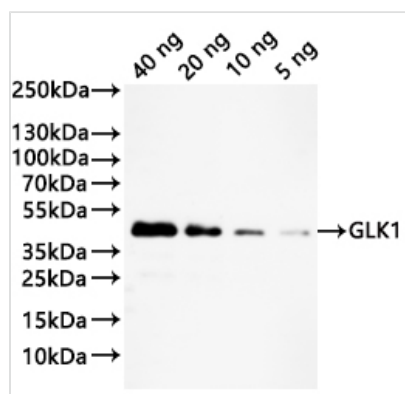




GLK1 Antibody

Product Code	CSB-PA733505XA01OFG
Storage	Upon receipt, store at -20°C or -80°C. Avoid repeated freeze.
Uniprot No.	Q5Z5I4
Immunogen	Recombinant <i>Oryza sativa</i> subsp. <i>japonica</i> (Rice) GLK1 protein (150-399aa)
Raised In	Rabbit
Species Reactivity	<i>Oryza sativa</i> subsp. <i>japonica</i> (Rice)
Tested Applications	ELISA, WB; Recommended dilution: WB:1:500-1:5000
Form	Liquid
Conjugate	Non-conjugated
Storage Buffer	Preservative: 0.03% Proclin 300 Constituents: 50% Glycerol, 0.01M PBS, pH 7.4
Purification Method	Antigen Affinity Purified
Isotype	IgG
Clonality	Polyclonal
Product Type	Polyclonal Antibody
Immunogen Species	<i>Oryza sativa</i> subsp. <i>japonica</i> (Rice)
Target Names	GLK1

Image



Western Blot

Positive WB detected in: recombinant protein

All lanes:GLK1 Antibody at 1:1000

Secondary

Goat polyclonal to rabbit IgG at 1/20000 dilution

Predicted band size: 34.3 kDa

Observed band size: 39 kDa

Usage

For Research Use Only. Not for use in diagnostic or therapeutic procedures.