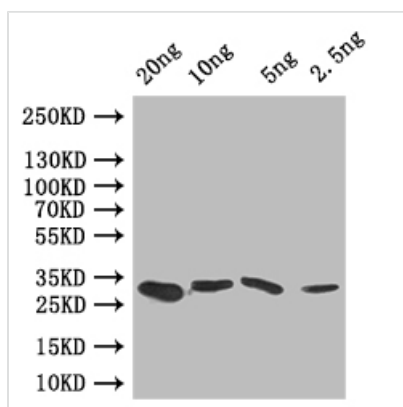




GRE2 Antibody

Product Code	CSB-PA609123XA01SVG
Storage	Upon receipt, store at -20°C or -80°C. Avoid repeated freeze.
Uniprot No.	Q12068
Immunogen	Recombinant <i>Saccharomyces cerevisiae</i> (strain ATCC 204508 / S288c) (Baker's yeast) GRE2 protein (1-120aa)
Species Reactivity	<i>Saccharomyces cerevisiae</i> (strain ATCC 204508 / S288c) (Baker's yeast)
Tested Applications	ELISA, WB
Form	Liquid
Conjugate	Non-conjugated
Storage Buffer	Preservative: 0.03% Proclin 300 Constituents: 50% Glycerol, 0.01M PBS, pH 7.4
Purification Method	Affinity-chromatography
Isotype	IgG
Clonality	Polyclonal
Product Type	Polyclonal Antibody
Immunogen Species	<i>Saccharomyces cerevisiae</i> (strain ATCC 204508 / S288c) (Baker's yeast)
Target Names	GRE2

Image



Western Blot

Positive WB detected in: recombinant protein

All lanes: GRE2 Antibody at 1:1000

Secondary

Goat polyclonal to rabbit IgG at 1/50000 dilution

Predicted band size: 30 kDa

Observed band size: 30 kDa

Usage

For Research Use Only. Not for use in diagnostic or therapeutic procedures.